



Strength & Shield

Company Introduction

Jan. 2021

Overview

Company Name: yusinHR Co., Ltd.

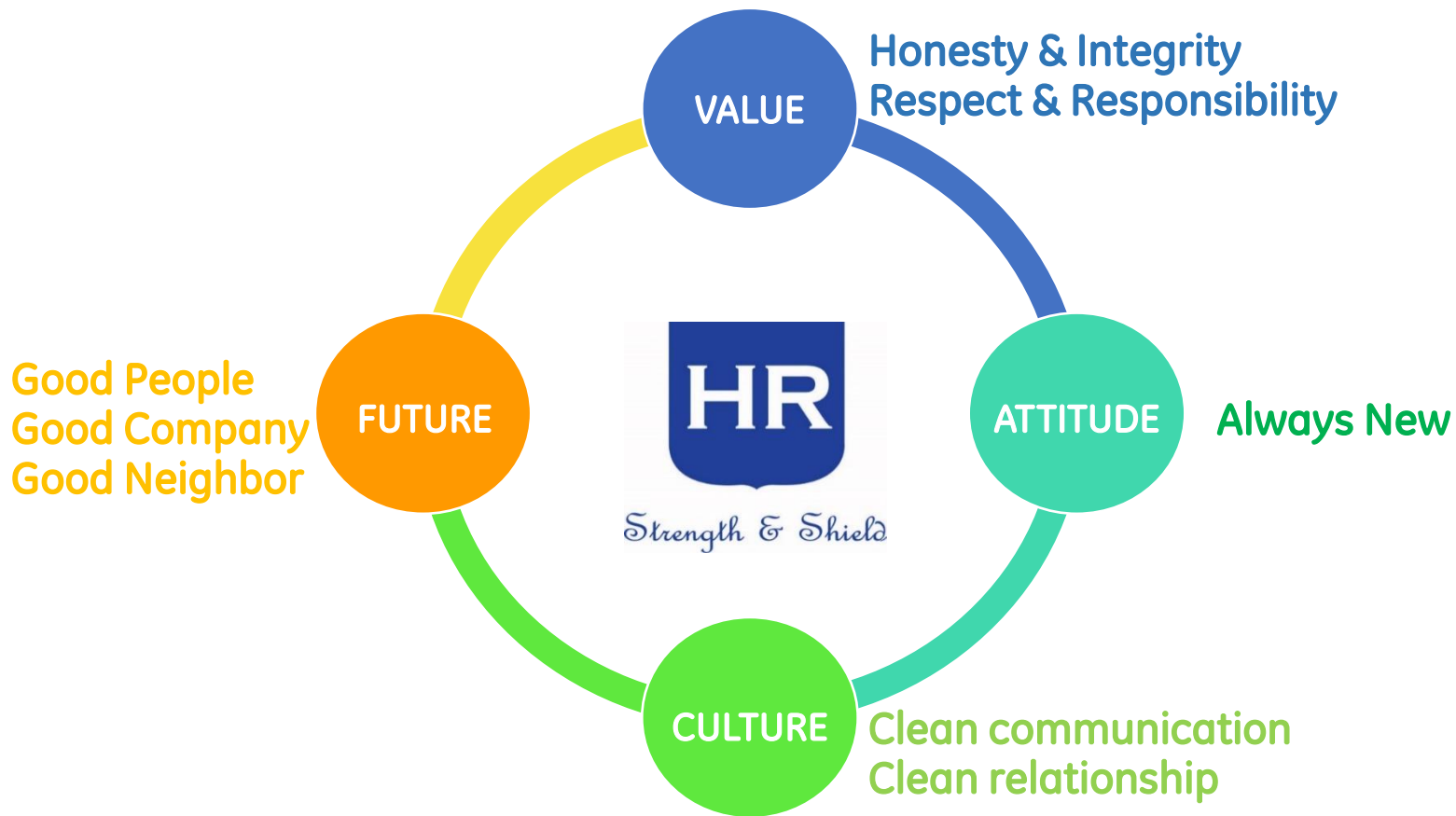
Address: 25, Ballyongsandan 2-ro, Jangan-eup, Gijang-gun,
Busan, Korea (zip. 46034)

Established: Oct. 27th, 2008

Branch: ① Daegu, Korea

Brand: PPN  **PPN**[®]

ISO 9001 : 2015 Quality Management System



Humility and Honesty toward Ourselves
Responsibility and Respect toward Customers

Our history

2008

Establishment



2011

GE, FALK Distributor



Distributor
GE Marine



Launching
PPN Brand



2015

Founded
2nd Branch in
Pohnpei, Micronesia

Scania, Yanmar
Dealership



Donaldson Dealership



2017

MarelliMotori
Distributor



2019

BH gearbox
Distributor



FUTURE

2010

Built a Company
Building

- Factory(repair shop)
- Warehouse
- Office

Volvo Penta Dealership



2012

Leroy-Somer
Distributor



2016

Established
2nd Factory for Gen-set

- Production Line
- Load Test Bench

2018



Relocation & Expansion

- Area: 6,600m²
- New Factory including
Test Shop, Facilities,
Warehouse & Office

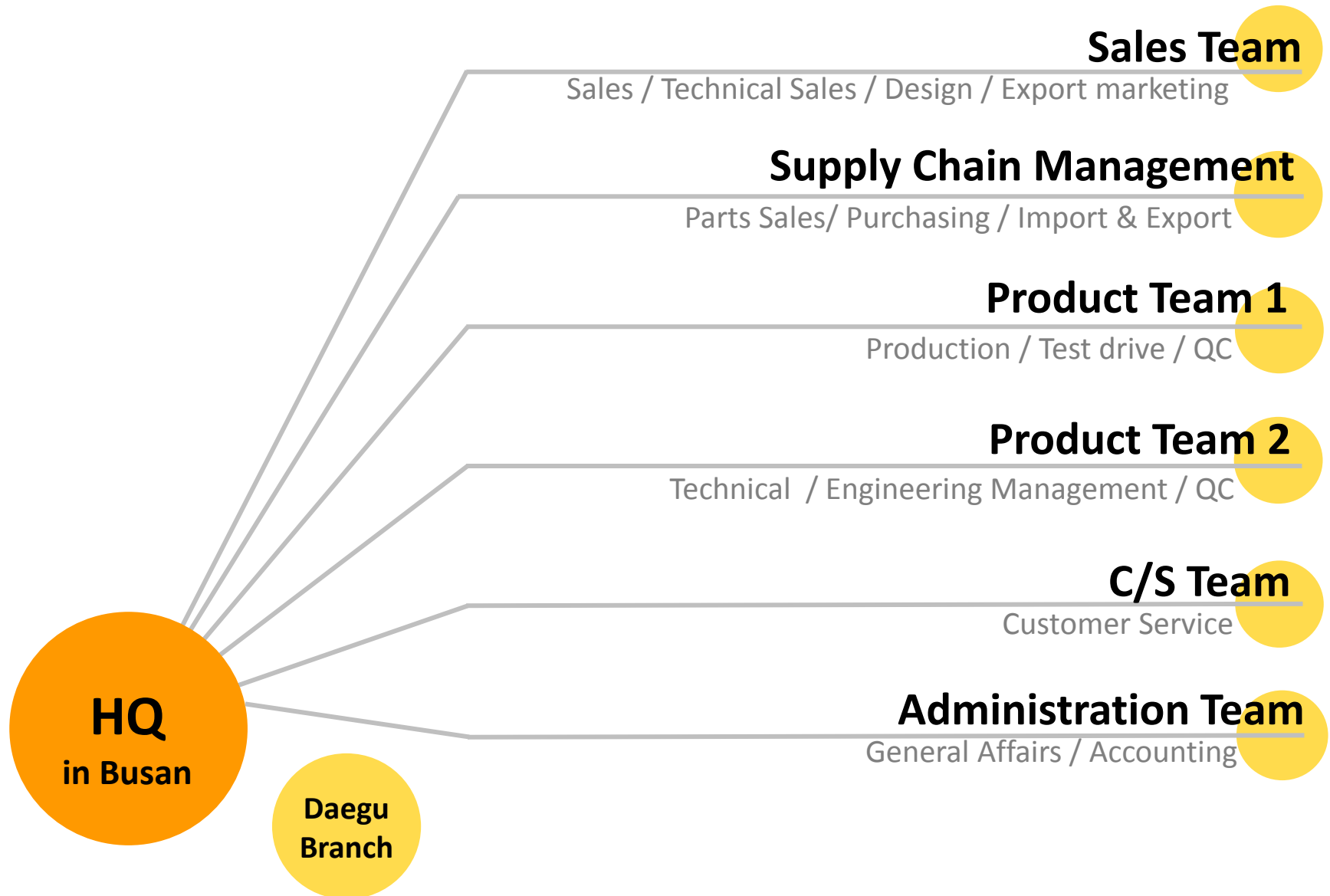
2020

TM Center
· Vietnam Partner

Varoline, ROS
Distributor



Organization





Generating-sets

Engine Sales

**Reduction Gear
Sales**









Parts Supply

Engine Maintenance

POSITIVE POWER NETWORK

Generating-sets



		Marine	Stationary
Range	50HZ & 60HZ	10 to 2,000 KW (12 to 2,500 KVA)	
Engine		Doosan, Scania, Hyundai, Volvo Penta, upon customer request	
Alternator		MarelliMotori, Leroy Somer and Others.	
Test		Factory Acceptance Test, Sea Trial Test, Commissioning, Parallel Test, Load Test	
Classification cert.		      	

Gen-set Sales record

Period : 2012~ Oct. 2020

Category	Range (kw)						Total
	~104	105~300	301~500	501~1000	1001~2000	Pump	
Marine	204	175	62	1	0	28	470
Stationary	50	35	32	33	20	1	171
Total	254	210	94	34	20	29	641
	40%	33%	15%	5%	3%	5%	100%

Category	Year									Total	
	2012	2013	2014	2015	2016	2017	2018	2019	2020		
Marine	17	17	16	73	96	73	71	56	49	470	73%
Stationary	1	5	5	2	2	6	37	69	44	171	27%
Total	20	22	21	75	98	79	108	125	93	641	100%

Maintenance Shop



Engine & Reduction gear Maintenance Shop

Machinery Shop



Exhibition

Genset Package Shop

Genset Shop



Genset Test Room

Monitoring System

Warehouse



Spare Parts

Filters



Crane
30 ton, 5 ton (2), 2 ton



Parallel Panel
2000kW x 3set /380V



Load Bank for Shop test
2000kW x 3set /380V



Refrigerating Machine
150 RT



Special Tool

Engine, Reduction gear Sales & Parts Supply

Engine Sales

Distributor



Distributor
GE Marine

GE Marine
(1700~6200hp)

Tuna Purse Seiner projects – Marine Propulsion engine

Owner	Shipyard	Model	Class	Remark
Hansung	Sungdong	GE16V250	KR	Including R/G
Dongwon	STX	GE16V250	KR	Including R/G, BMS, AMS
Dongwon	STX	GE16V250	KR	Including R/G, BMS, AMS
Dongwon	Daesun	GE16V250	KR	Including R/G, BMS, AMS
Dongwon	Daesun	GE16V250	KR	Including R/G, BMS, AMS
Dongwon	Daesun	GE16V250	KR	Including R/G, BMS, AMS
Dongwon	Daesun	GE16V250	KR	Including R/G, BMS, AMS

Dealership



**VOLVO
PENTA**

(12~900hp)



YANMAR
Solutioneering Together

(464~1822hp)



SCANIA

(220~1050hp)



HYUNDAI SEASALL

(120~500hp)

Reduction Gear Sales

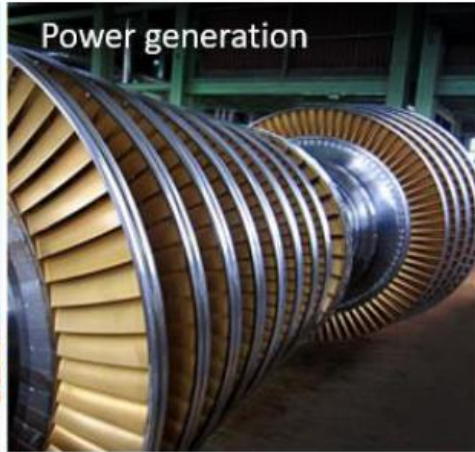
PT Driving Critical Equipment in Critical Industries



Oil & gas



Power generation



Wind



Marine



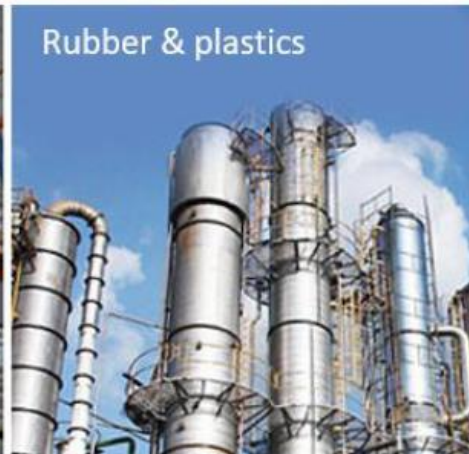
Steel & metal



Sugar



Rubber & plastics



General industry



We can supply the Genuine spare parts of various engine makers

Full Product Line

Competitive Price

Excellent Service

Engine Makers

GE

VOLVO

YAMNAR

HYUNDAI

DOOSAN

GM/EMD

DEUTZ/MWM

CUMMINS

CATERPILLAR/MAK

PERKINS

MAN

PAXMAN

MTU

Upon request

Parts supply



This is a high quality component that has been certified by the U.S. Department of Defense as an aftermarket product of the CATERPILLAR engine.



The professional maker invented an air cleaner the world's first, with over 100 years of technical skill, applied to the various engines of marine and industrial.

Engine & Reduction gear Maintenance

Maintenance

We have the capacity enough to repair all kinds of High & Medium-speed engines for Marine and Land Power.

Makers		Manpower				
GE VOLVO YAMNAR HYUNDAI DOOSAN GM/EMD FALK LUFKIN	MTU CUMMINS CATERPILLAR/MAK PERKINS DEUTZ/MWM MAN PAXMAN Upon request	Category	Career (Years)			Total
			~15 years	16~30 years	31~ years	
		Overhaul & Repair	7	6	3	16
		C/S	2		1	3
		Total	9	6	4	19

Repair record

■ High Speed Engine

Period : 2012~ Aug.2019

	VOLVO	Caterpillar	Cummins	SCANIA	MTU	Doosan	Others	Total
OVHL	62	116	51	3	39	57	46	374
Repair	235	83	80	19	4	164	81	666
Total	297	199	131	22	43	221	127	1040

* Number of engines

■ Medium Speed Engine

Period : 2012~ Aug.2019

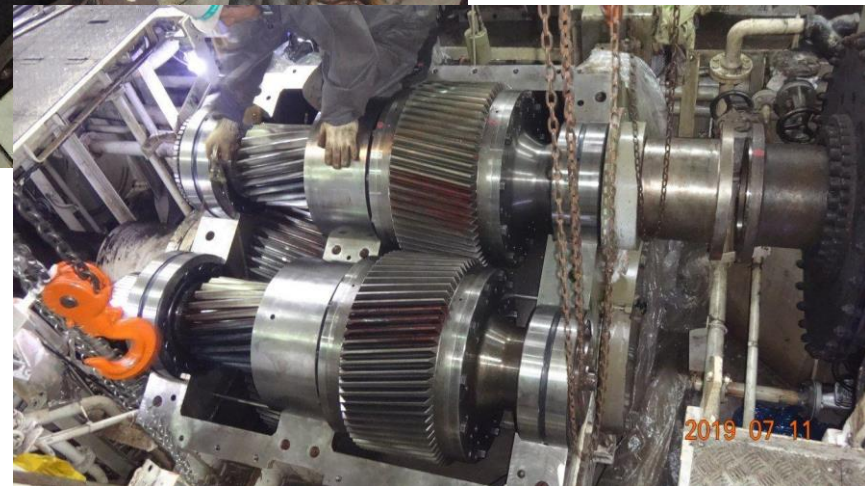
	EMD	GE	WAUKESHA	Others	Total
OVHL	13	6	7	9	35
Repair	58	21	3	22	104
Total	71	27	10	31	139

* Number of engines

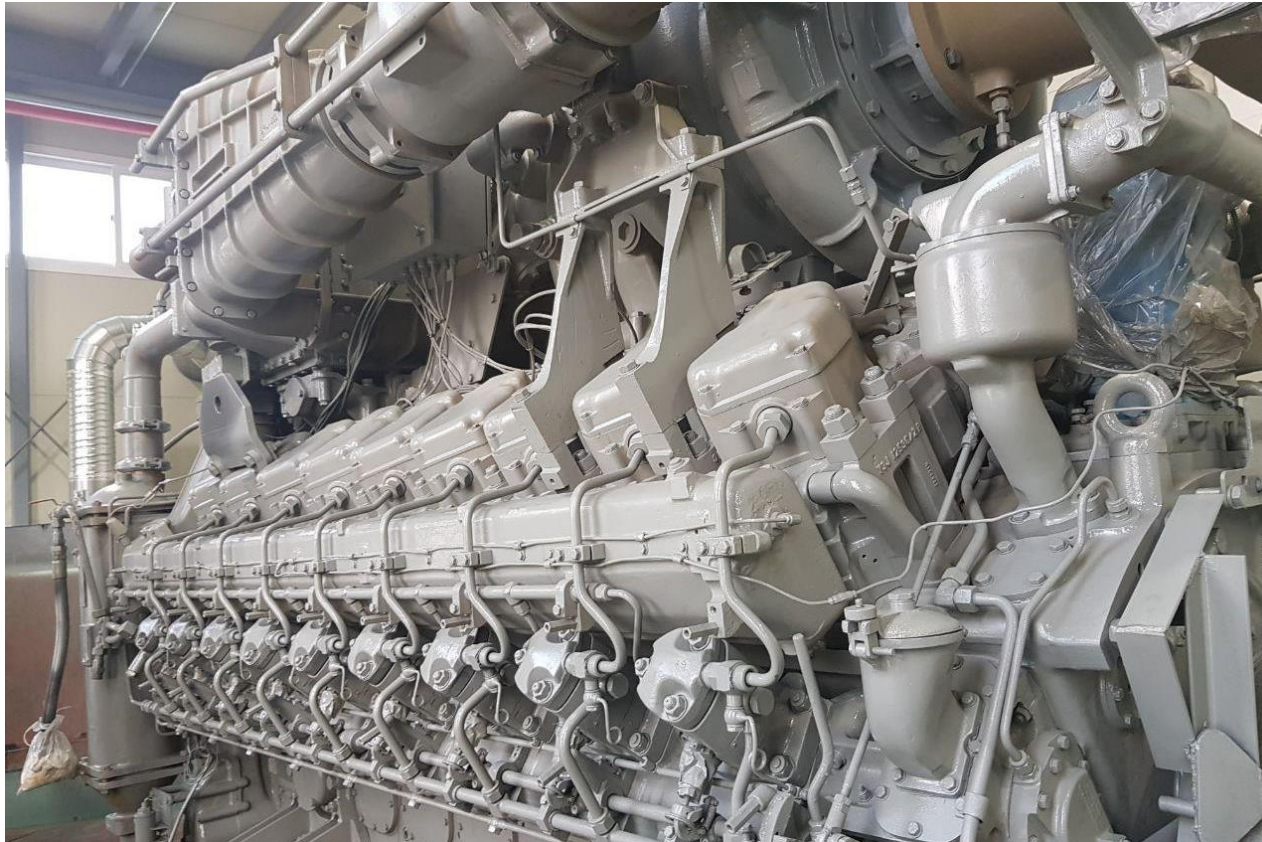
Reduction gear Repair



- Customer : Dongwon Industries
- Project : Engine Reduction gear
- Country : Korea (South)
- Year : 2019



Engine Repair-MTU



- Customer : Korea Navy
- Project : Engine repair service (MTU)
- Country : Korea (South)
- Year : Since 2019



Engine Repair-MTU



대한민국해군
REPUBLIC OF KOREA NAVY

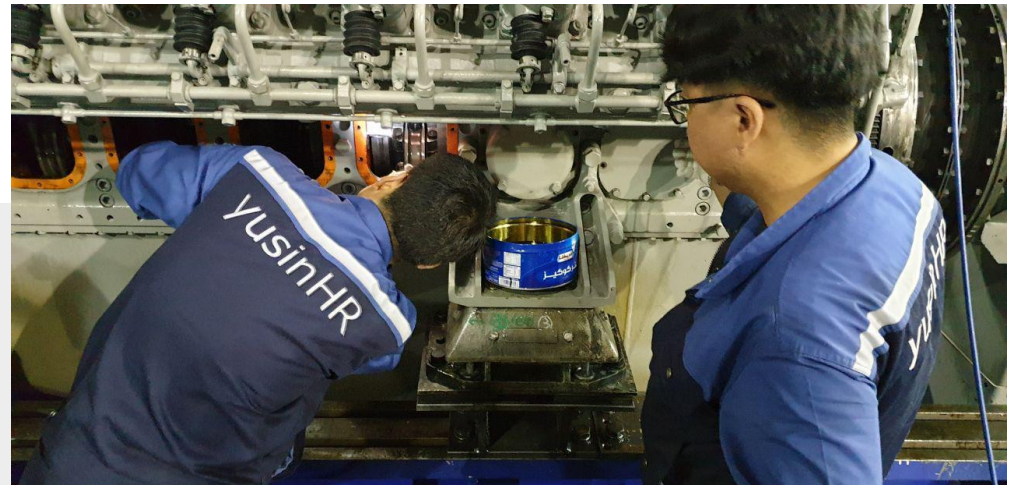


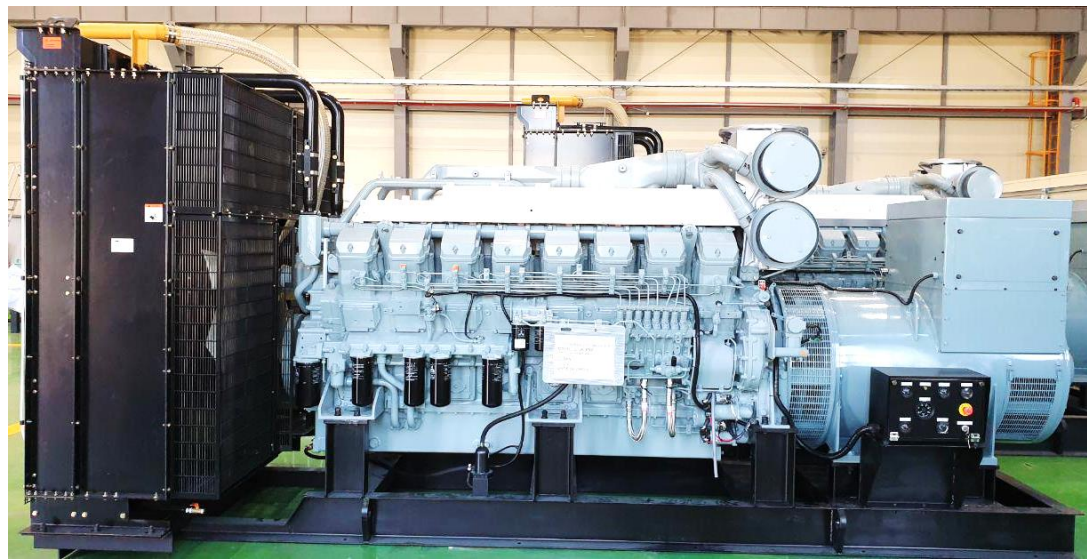
- Customer : Korea Navy
- Project : Engine repair service (MTU)
- Country : Korea (South)
- Year : Since 2018

Engine Repair-MTU

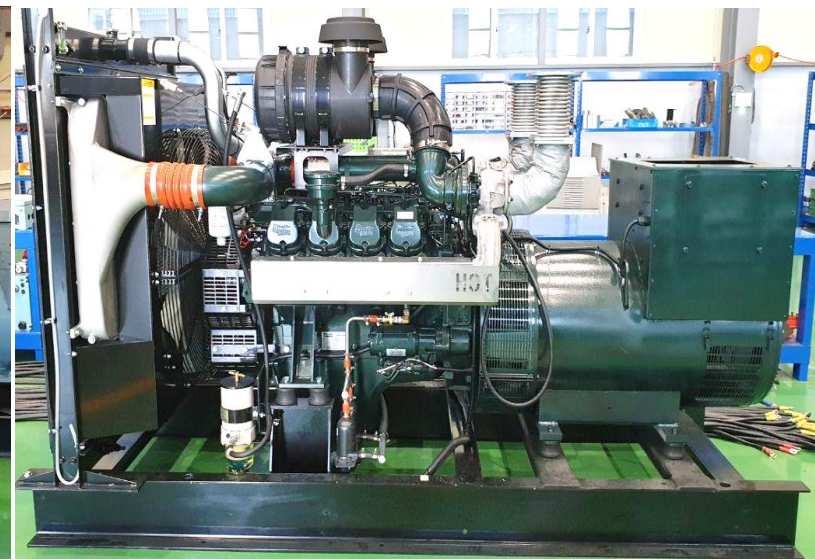


- Customer : Korea Navy
- Project : Engine repair service (MTU)
- Country : Korea (South)
- Year : Since 2019





1500KW gen-set with Mitsubishi engine



500KW gen-set with Doosan engine

- Customer : HYOSUNG Heavy Industries
- Project : **Industrial & Emergency** gen-set (330~1750kw) for apartments, Industrial buildings
Engine: Mitsubishi, MTU, Doosan
- Country : Korea (South)
- Year : Since 2018 ~

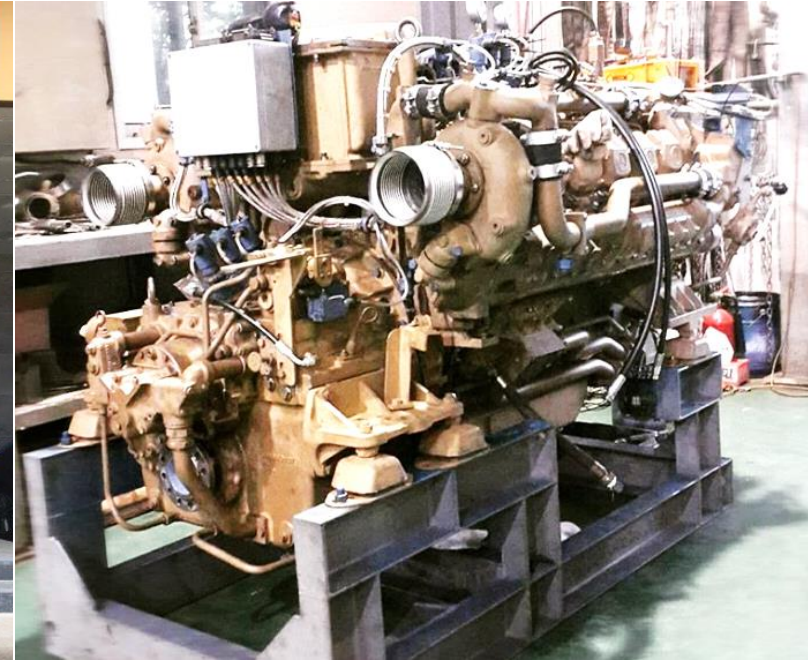
Industrial Projects



- Customer : Incheon Container Terminal
- Project : Gen-set for RTG cranes
- Country : Korea (South)
- Year : 2019



Government Projects



- Customer : Korea Navy
- Project : Engine repair service (MTU, Paxman)
- Country : Korea (South)
- Year : Since 2008 ~



대한민국해군
REPUBLIC OF KOREA NAVY



- Customer : Korea Air Force
- Project : Engine Overhaul & Shop test service for Military 2,000 KW Gen-set (Cummins QSK6.0)
- Country : Korea (South)
- Year : 2019

Government Projects



- Customer : Korea Maritime Police
- Project : Engine repair service (MTU) , Engine parts supply
- Country : Korea (South)
- Year : Since 2011 ~





MWM
Energy. Efficiency. Environment.
A Caterpillar Company

- Customer : Busan Metropolitan City Hall
- Project : Engine repair for patrol ships (MWM), Ship equipment
- Country : Korea (South)
- Year : 2015





- Customer : GyeongNam Provincial Government
- Project : Main gen-set for 80Ton patrol ships (PPN100DM-KST, 100kW)
- Country : Korea (South)
- Year : 2019



Oversea Government Projects



- Customer : Daesun Shipbuilding
- Project : Main Engine for Peru Navy LCU (Volvo D9MH 355hp x 1800rpm)
- Country : Peru
- Year : 2018

Oversea Sales & Repair Market





Thank you

HR yusinHR

Strength & Shield