



www.jhpolestar.co.kr



JONGHAP

POLESTAR ENGINEERING

SINCE 1980



(株)綜合폴스타
POLESTAR ENGINEERING CO.,LTD.



SPECIAL WELDING WORKS

- TIG, MIG, PTA, SAW & Low Temp. Welding
- Special Hardfacing & Overlay(Cladding) Welding

RECONDITION WORKS

: all kinds of 2 & 4 stroke Diesel Engines

RECONDITION / OVERHAUL / REPAIR

- Cylinder Cover / Head
- Exh. v/v Spindle & Bottom Piece,
- Piston Crown, Rod, Skirt, and etc.

CHROME PLATING

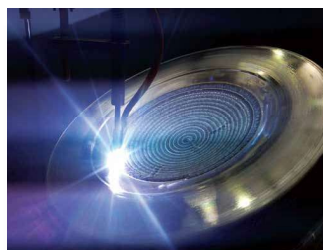
- Ring Groove for Piston Crown
- Stem Part for Exh. v/v Spindle
- Shaft and etc.

HVOF COATING

- Piston Rod, Exh v/v Spindle & Cage

OTHERS

- FIVA Valve,
- F.O.Parts (Plunger & Barrel, Spindle Guide, Nozzle and etc.)



CERTIFICATES APPROVED :

MAN DIESEL & TURBO

- Reconditioning of Exh. v/v DURA Spindle
- Cylinder cover : Inconel 625 Cladding using of the GMAW-P Process
- Piston crown : Inconel 625 Cladding using of the SAW & GMAW-P Process

MITSUBISHI HEAVY INDUSTRIES

- Authorized Repair Agent of UEC Diesel Engines

WÄRTSILÄ

- Inconel 625 Cladding Forged and Casting Cylinder Cover

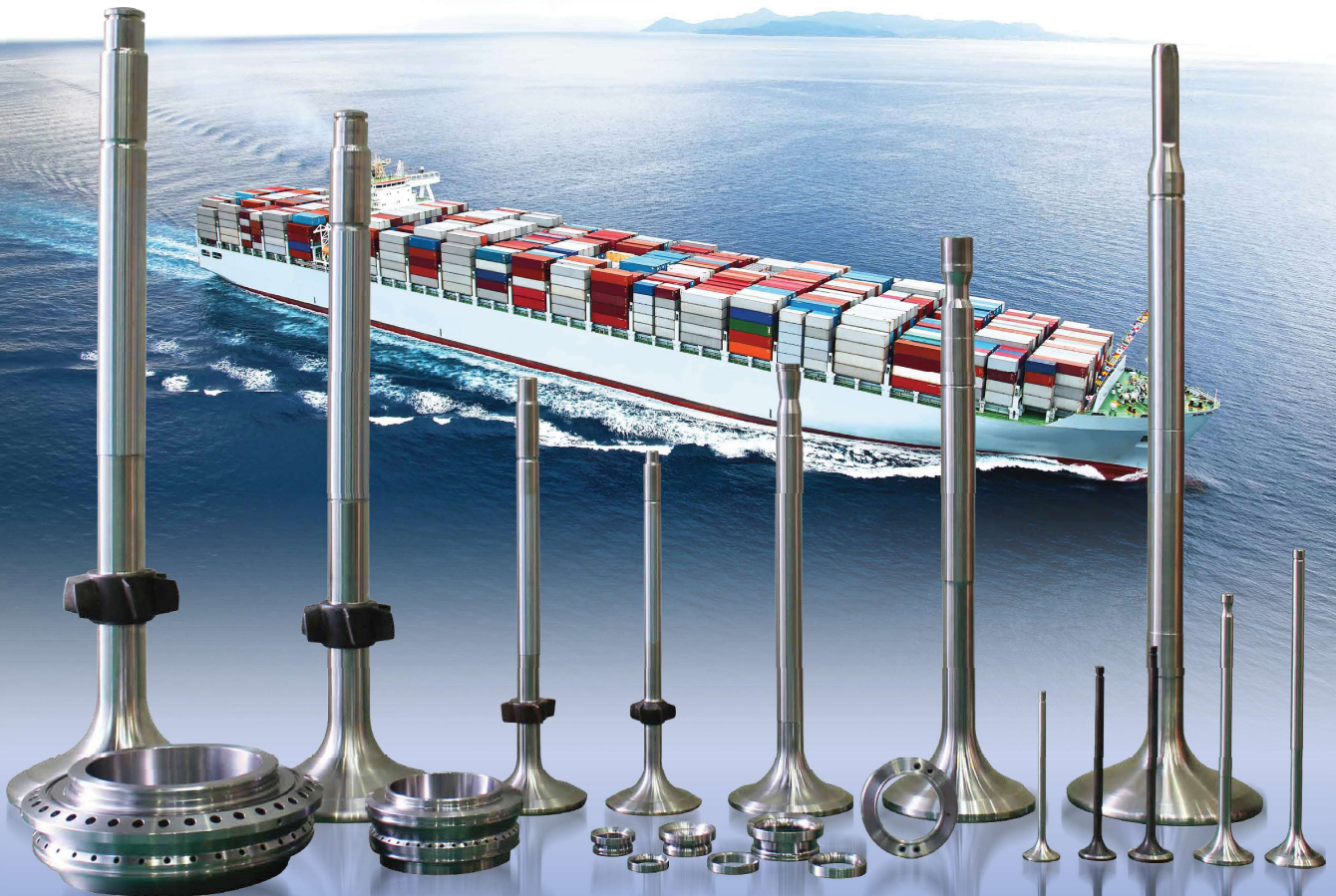
CLASSIFICATION

- WPS / PQR / WPQR BY ABS, KR, LR, NK, DNV-GL, BV, RINA

ISO 9001 & 14001 (ABS)

NEW PRODUCTS

Valve Spindle & Bottom Piece / Seat for 2 & 4 Stroke Diesel Engines



The new product of Jonghap Polestar is not concerned with genuine manufacturer.

Product Order Options

■
Maker

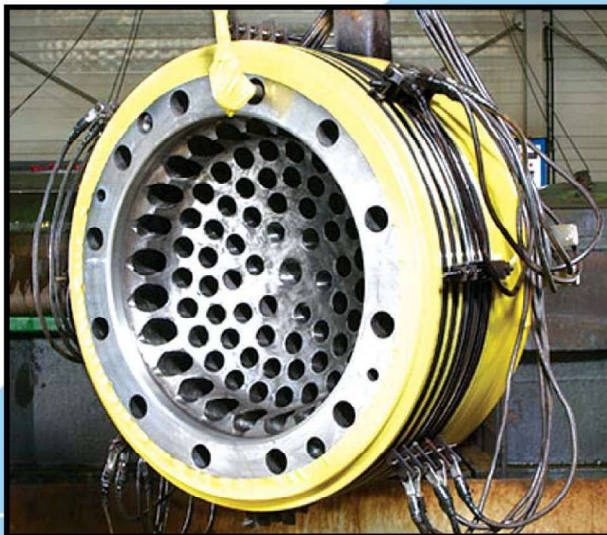
■
Model / Type

■
Materials : SNCrW, NIMONIC, DURA, and ETC.

METAL SPRAY FOR PISTON ROD



CHROME PLATE



DIESEL ENGINE CYLINDER COVER



▲ INCONEL Cladding on New Cylinder Cover

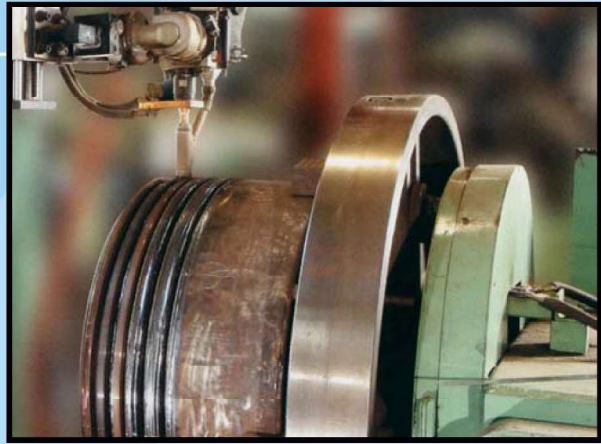


▲ GTA (Gas Tungsten Arc) Welding

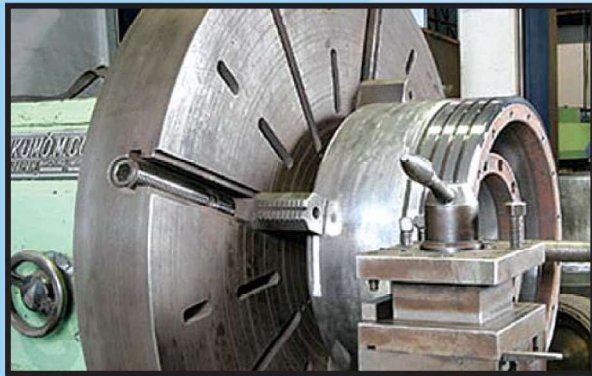
DIESEL ENGINE PISTON CROWN



▲ INCONEL Cladding on New Piston Crown

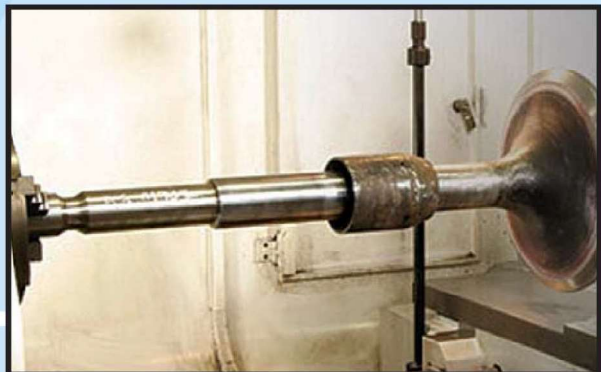


▲ Sub-Merged Arc Welding

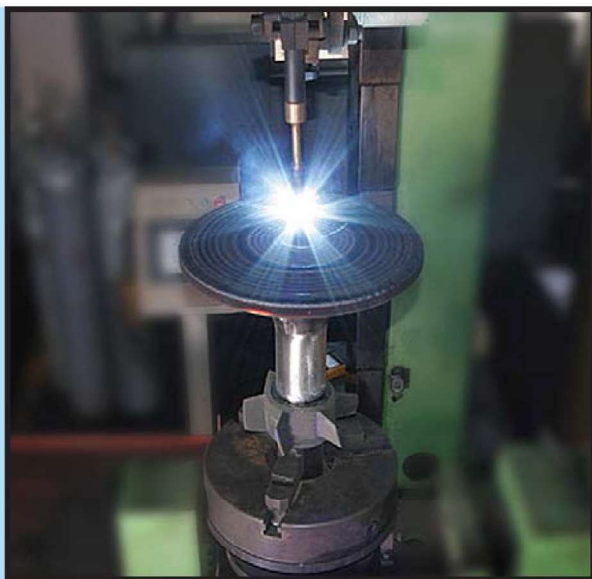


▲ Machining by Lathe

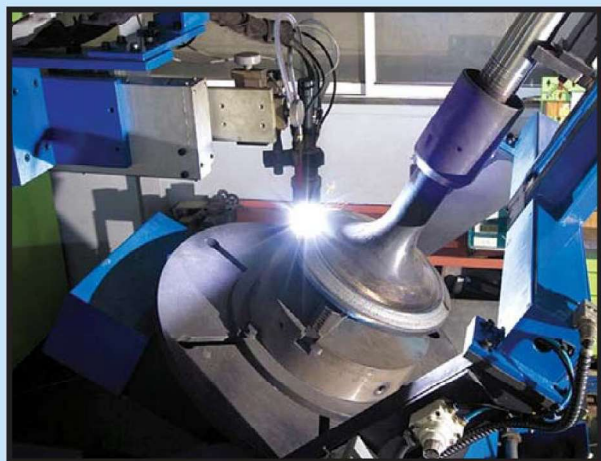
DIESEL ENGINE EXHAUST VALVE SPINDLE



▲ Machining by NC (Numerically Controlled) Lathe



▲ GMA (Gas Metal Arc) Welding



▲ PTA (Plasma Transfer Arc) Welding



Contact Us

- Homepage : www.jhpolestar.co.kr
- E-mail : jonghap@jhpolestar.co.kr

JONGHAP POLESTAR ENGINEERING CO., LTD.

• Head Office

313, Mieumsandan-ro, Gangseo-gu, Busan 606-805, Korea

Tel : +82-51-403-5514~6 / Fax : +82-51-403-5517

• Chrome Workshop

35, Noksansandan 261-ro, Gangseo-gu, Busan, Korea

Tel : +82-51-831-5508 / Fax : +82-51-831-5510

• Seoul Office

1201 Kwang il Bldg, 5 Dadong-gil, Jung-gu, Seoul, Korea

Tel : +82-2-773-2381 / Fax : +82-2-756-7077

Related Company

POLESTAR MARINE ENGINEERING CO., LTD.

12-14, Takamatsu-cho, Hyogo-ku, Kobe, Japan

Tel : +82-78-651-8784 / Fax : +82-78-681-3692

POLESTAR MARINE ENGINEERING PTE., LTD.

3 Tuas Avenue 13, Singapore 638975

Tel : +65-6863-0822 / Fax : +65-6863-0688

NEW STAR MARINE ENGINEERING CO., LTD.

No. 68 Kang Shin Street Hsiao-Kang District, Kaohsiung, Taiwan

Tel : +886-7-822-9220 / Fax : +886-7-822-6729