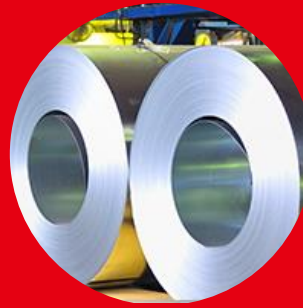


New Start



stx Marine Service

COMPANY INTRODUCTION

Contents

- 01. Company Overview
- 02. Business Scope
- 03. Ship Management
- 04. Plant Service

01 Company Overview

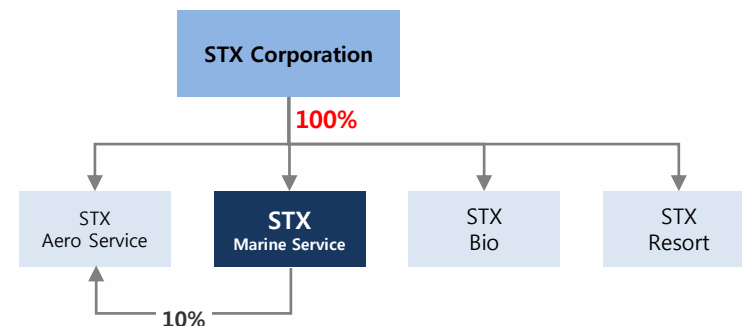
● Company Profile

| | |
|---------------------|---|
| Company Name | STX Marine Service Co., Ltd. |
| CEO | Park, Sang-Joon |
| Capital | 10 billion KRW |
| Number of employees | 150 |
| Address(HQ) | 102, Jungang-Daero, Jung-Gu, Busan, KOREA |
| Established | April 01, 2011 |

● History

- 1966~1996 Formed in 1966 (as division of shipping company "Pan Ocean")
- 1997~2010 Established in 1997, POS Ship Management/ Merged into STX Group in 2005
- 2011 **Founded STX Marine Service**
- 2012~2016 **Commenced O&M of Iraq 900MW Diesel Power Plants in 2012**
- 2017~2018 Brazil EPSA Engine Maintenance & Philippines TPP Extended Agreement

● Affiliated Companies

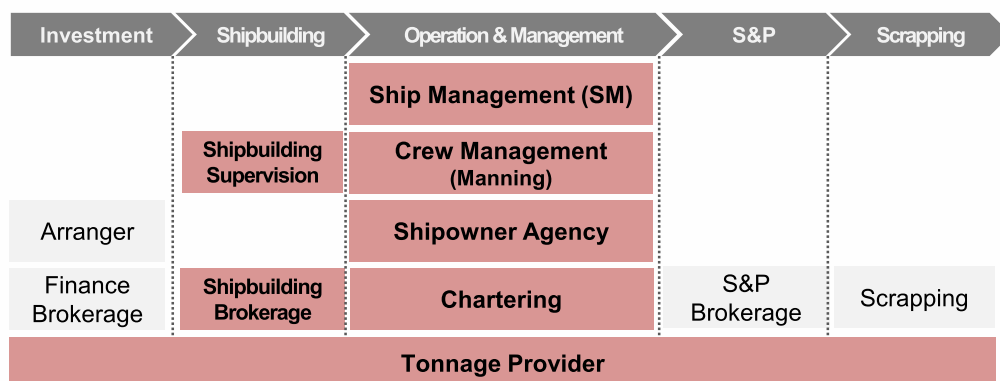


02 Business Scope

Provide professional services for comprehensive "ship management" and "power plant operation & maintenance"

● Business Scope

► Ship Management



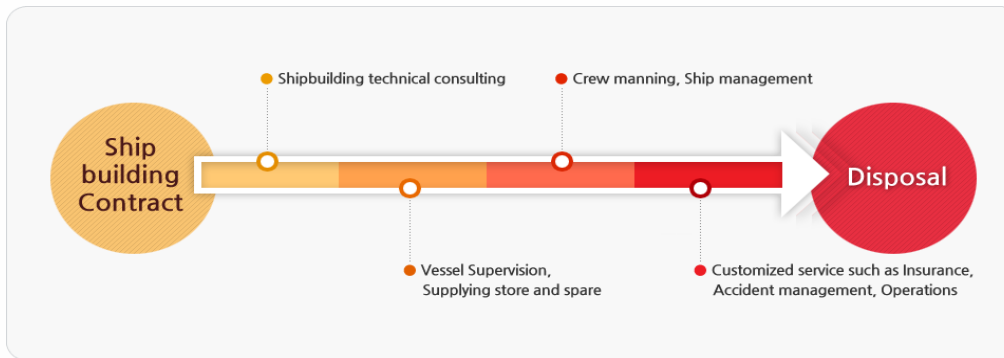
► Plant Service



03 Ship Management

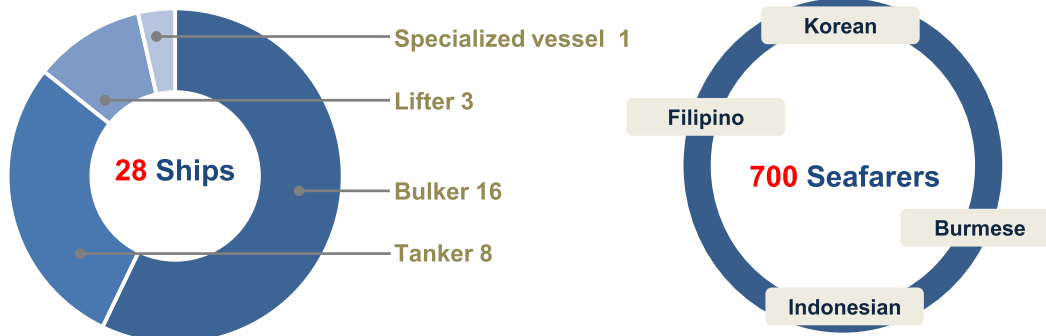
○ Scope of Service

- Comprehensive work in all areas of ship management from ship construction to dismantling



○ Diversified types of Managing Fleets & CREW

- Stable and Qualified Crew Pool



Korea's best ship management for third party

- including Hyundai glovis, IS Shipping & others



Ship management for overseas ship owners

- including STEEL SHIPS (USA) & DOUN KISEN (JAPAN)



Specialized ship management for 'Korea Polar Research Institute'

- Icebreaker Research Ship <ARAON> (Ongoing management since 2009)



TONNAGE PROVIDER

- BBC Chartering 3 Vessel
- T/C Revenue for Global Top Charterers

○ Cost Effective Management

Scale Merit Negotiation Power (Lub. oil, Spare, Store, Insurance Premium)

- Exclusive Procurement team / Competitive price
- Quality / price management
(Yearly package price negotiation, Regular Evaluation of Provider)
- Agent management / Network utilization
- Excellent inventory system
- Best insurance (H&M, P&I) Premium based low accident ratio



Package Deal with Shipyards

- Annual performance evaluation of each repair ship yard
- Package Deal for repair ship yard
(Chengxi, Shanhaiguan, Longshan, Haizhou, CIC, COSCO and Beihai)
- Record : Yearly about 10ships
Drydock

Commercial management

- Commercial management service provided if needed Such as insurance, chartering, S&P
- Market analysis or related marine technical consulting Service provided within reasonable price



03 Ship Management

○ Certification for ship management

- Maintain high standards In Safety and environment system



○ STX Ship management IT Platform (POMARIS)

- Organic linkage of work handled by shore & ship
 - With an IT system for crew management/ship management developed with proprietary technology for the first time in Korea, all work processes can be simplified & carried out through the IT system
 - Realize work transparency, effective budget execution, prompt work feedback & decision-making through organic/effective linkage between the shore & ship



04 Plant Service

○ Scope of Service

- STX Marine Service is providing fully integrated services in every aspect of various kinds of power plants not only commercial management but also technical operation such as Operation and Maintenance, Overhaul and Rehabilitation, Equipment & Parts supply, Solution Service, Engineering Service, Training Service, New Power Plant Development and So on.



○ Service Description

- Plant Operation & Maintenance

- Qualified & Experienced Human Resource
- Prompt Technical Support
- Preventive and Advanced Maintenance
- Operational Parts Procurement & Supply
- Training of Owner's Engineers

- Overhaul & Rehabilitation

- Planning Maintenance Schedule
- Providing Major Overhaul Service
- On/Off Site Inspection
- Rehabilitating non-functioning facilities
- Performance Improvement

- Spare Parts & Solution Providing

- Major Spare Parts Supply
- Safety & Cost Saving Solution
- Trouble-shooting & Maintenance
- Training Service



○ Business Development

- Independent Power Producer (IPP)

- STX Marine Service has expanded its business portfolio from O&M service to IPP with financing and our business will leverage mutual synergy optimization with STX Group to satisfy the needs of customers around the world.
- Business Area
 - Combined Cycle Power Plant (CCPP)
 - ROMM (Rehabilitation/Operation/Maintenance/Management) for Damaged Power Plant
 - Renewable Energy : Solar/Energy Storage System/Fuel Cell/Etc.



- Financing Support

- STX Marine Service supports world-wide business activities by providing comprehensive and customer-oriented financial solution for companies that act as EPC contractors, Investors, O&M contractors and off-takers in business development and investment.
 - Providing advisory service on all aspect of financing and feasibility analysis of IPP & PPP
 - Offering customized financial service for SOC infrastructure projects such as environmental Plants, logistics and harbor development (port and terminal).



○ Major Performance

- IRAQ 900MW Diesel Power Plants (O&M, Spare Parts, Overhaul work)

- **Client** : Iraq MOE (Ministry of Electricity)
- **Capacity** : Total 900MW at 4 Sites
- **Completed Contract amount** : USD 163 M

- IRAQ 900MW Diesel Power Plants (PPA)

- **Client** : Iraq MOE (Ministry of Electricity)
- **Capacity** : Total 900MW at 4 Sites
- **Project period** : 5 Year ('18.07.~'23.06.)
- **On-going Contract amount** : USD 499.6 M



- IRAQ 360MW Diesel Power Plant Project (Rehabilitation)

- **Client** : Iraq MOE (Ministry of Electricity)
- **Capacity** : Total 360MW at 9 sites
- **Project period** : 16 months after L/C opening (not commenced yet)
- **On-going Contract amount** : USD 185 M

- IRAQ 360MW Diesel Power Plant Project (O&M)

- **Under discussion for 10 Years O&M**

- Philippines 650MW Thermal Power Plant O&M Project

- **Client** : Power Sector Assets & Liabilities Management Corporation
- **Capacity** : TPP-1 300MW, TPP-2 350MW
- **Completed Contract amount** : PHP 1,307 M



05 Global Network

