



2021

**FOR KEEP YOUR BUSINESS
WE'LL COVER UNDERWATER**



PACIFIC OCEAN

Pacific Ocean Marine Industries Co., Ltd.

C O N T S

- UNDERWATER OPERATION SPECIALIST
- CUSTOMER SATISFACTION
- GLOBAL COMPETITIVENESS
- CERTIFICATE
- UNDERWATER SHIP`S HUSBANDRY
- IN-WATER SURVEY
- UNDERWATER MAINTENANCE
- UNDERWATER WELDING/CUTTING
- UNDERWATER CLEANING
- STRUCTURE INSTALLATION
- AZIMUTH THRUSTER UNDERWATER MOUNTING
- SUBSEA HABITAT INSTALLATION
- EMERGENCY RESPONSE/SALVAGE
- OIL SPILL RESPONSE
- OIL TANK CLEANING
- MARINE CONSTRUCTION
- OFFSHORE INSTALLATION
- OIL PLATFORM TOTAL SOLUTION
& SUBSEA MAINTENANCE
- DIVER LOCK - OUT SUBMARINE
- HEAD OFFICE & BRANCH OFFICE
- COMPLETED DIVING SPREAD
- CHAMBER / LARS
- FLEET LIST

GLOBAL COMPETITIVENESS

PACIFIC OCEAN

Pacific Ocean Marine Industries Co., Ltd.



We have acquired registers of shipping in 10 countries by IACS as the first company in Asia, and become a regular member of ADCI and ISU to gain global competitive edge. Through it all, we lead the national underwater industries elevating the reputation of Korean underwater industries worldwide.

A member of ADCI



UNDERWATER OPERATION SPECIALIST



PACIFIC OCEAN MARINE INDUSTRIES was established in 1986 as Pacific Ocean Underwater Development. Since its establishment we have grown into Korea's leading company in marine industries by successfully specializing in underwater operation and offshore construction. Our 100 employees in head office and branch office in Philippines are dedicated to offer best service under our own safety regulation.

We are qualified by class society from 10 countries around the world for the first time in Asia. We always do our best to provide the prompt and perfect service in the field of ships, shipbuilding, ports, dam and inland water power plants based on our strong belief to become the best expert in marine and underwater operation with the best equipment and system.

ABOUT OUR SERVICES



Certificate of Business
Registration-Busan



Certificate of Business
Registration-Ulsan



Certificate of Business
Registration-Yeosu



Collecting Marine Wastes
Business
Registration



Custom Registration
Certificate
(Underwater Construction
Business)



Custom Registration
Certificate
(Ship repairing
Business)



Abroad Construction
Business Report
Certificate



Certificate of Research
Development Center



Marine Pollution control
Certificate



Certificate of
Venture Business



Cleaning and maintaining(re-
pairing) fishery
Registration Certificate



Business Renovation Small
and Medium
Company Certificate

CLASSIFICATION CERTIFICATION

Quality and Safety Management System



Korea (K.R)



United Kingdom (L.R)



Japan (N.K)



France (B.V)



Germany (D.N.V/G.L)



Russia (R.S)



Italy (RINA)



U.S.A (A.B.S)



QUALITY MANAGEMENT SYSTEM

ISO 9001



OCCUPATIONAL HEALTH AND SAFETY ASSESSMENT SERIES

ISO 45001

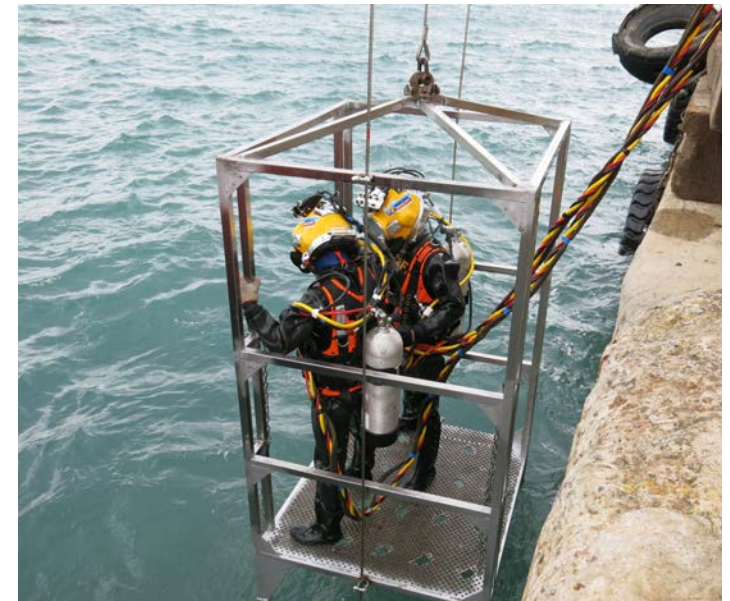
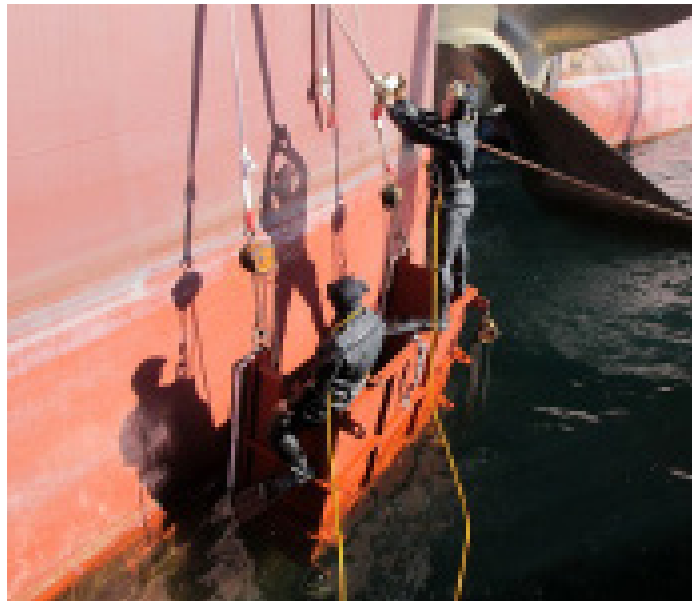
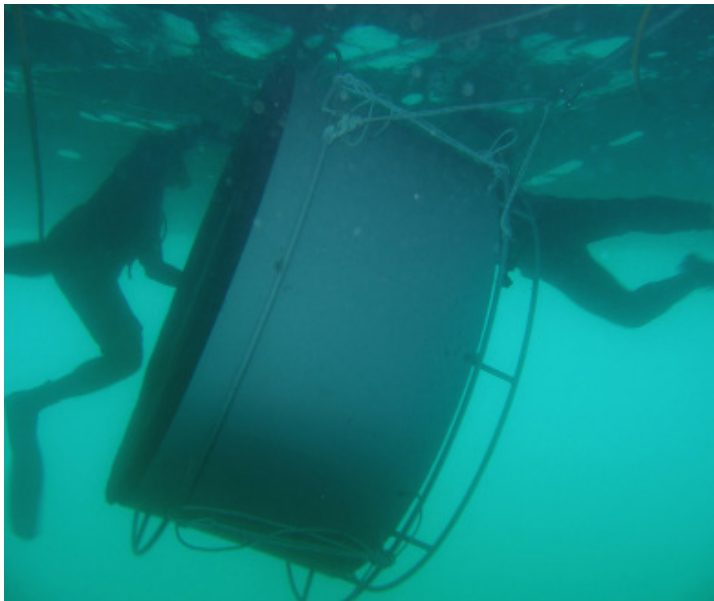
CUSTOMER SATISFACTION

We dedicate to improve our customer's satisfaction through accident-free. All executives and staffs keep on challenging with our common dream and passion.
For this, we got ISO 9001 and OHSAS 18001 certificates which are recognized in the world and put them into practice.



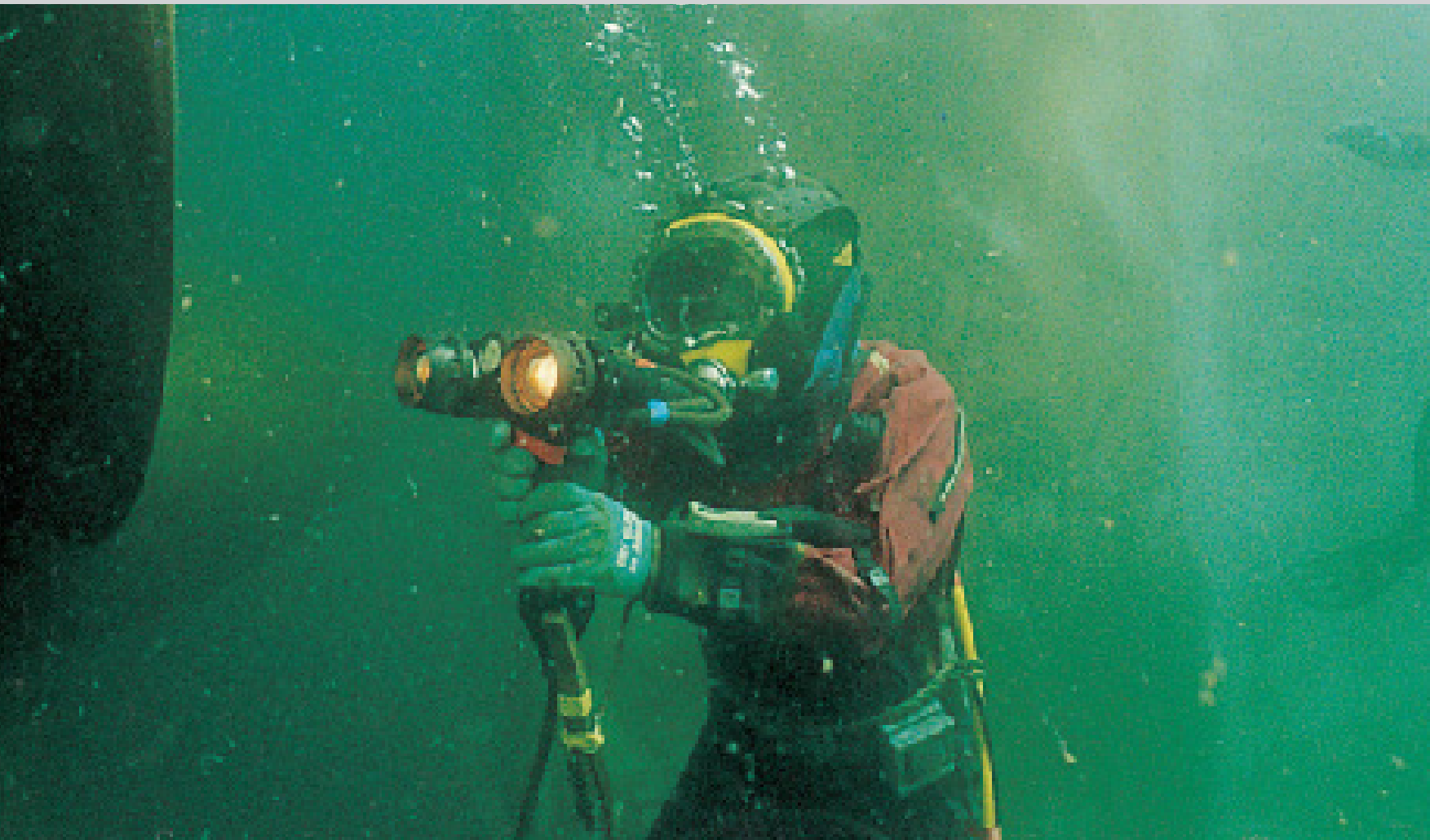
UNDERWATER SHIP'S HUSBANDRY

We have been running business in this field for the last 35 years specializing in underwater operation. Our technology and know how built for a long time have made us as a recognized specialist in underwater inspection, hull cleaning, welding, cutting and repairs. Though our underwater ship's husbandry service, you can economize your expenses by reducing frequency of ship repair and dry docking.



IN-WATER SURVEY

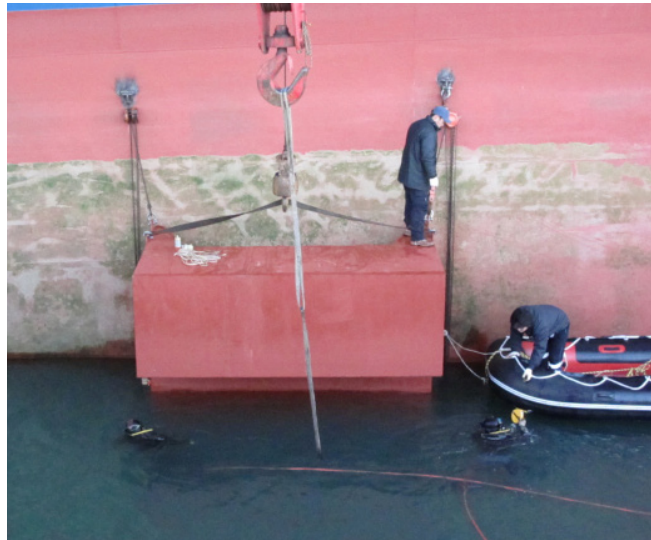
In water Survey is a method of surveying the underwater parts of a ship while it is still afloat instead of dry docking. It may be accepted in lieu of intermediate dry dock. Also, the rudder bearing clearance and tail shaft measuring should be conducted by expert divers. We are the only company that is qualified by 10 class certificates from IACS in Asia. Through our own curriculum for training onsite, every diver is trained professionally. We are ready to provide fast and accurate In water survey for you.





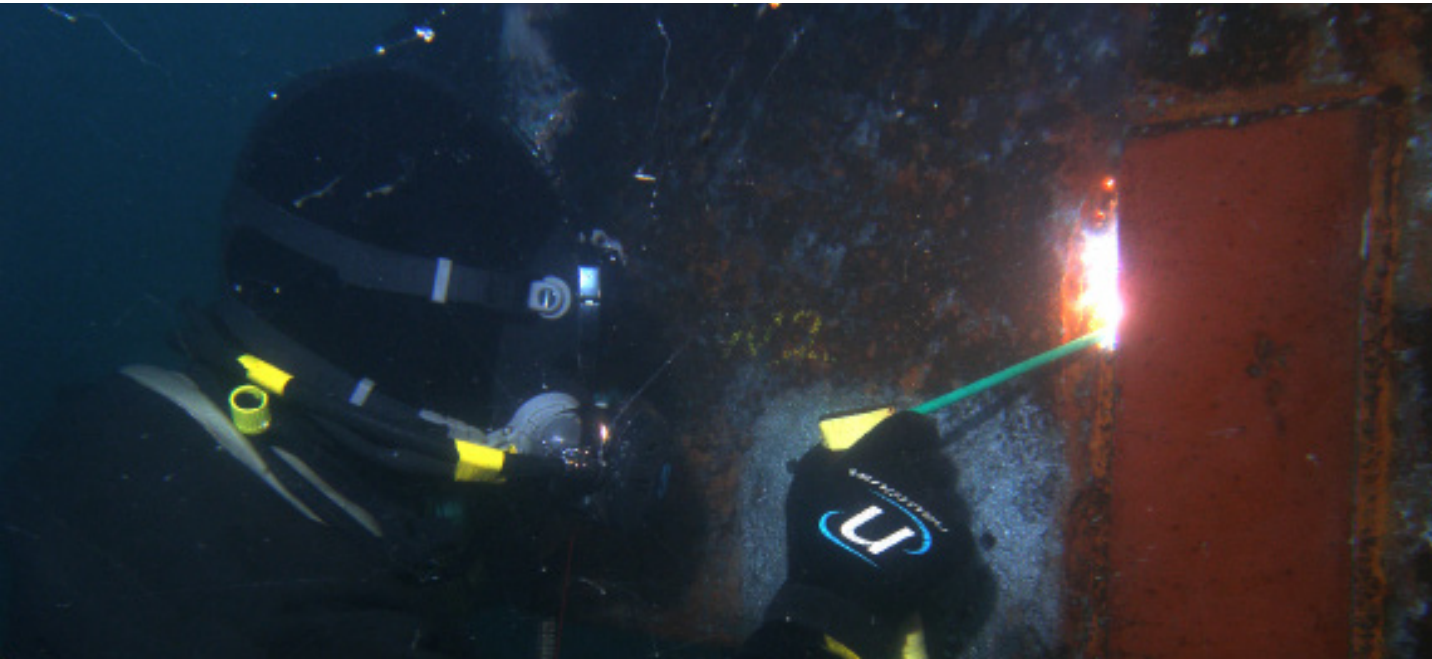
UNDERWATER MAINTENANCE

Our main purpose is to provide and complete our services underwater. Just same as 'Dry-dock' UNDER THE WATER. For this, we have developed numbers of technical patents and achieved significant results. If you have any problem regarding underwater we can give customized and economical solution to you for sure.



UNDERWATER WELDING/CUTTING

You don't need to worry about damage or leakage anymore!

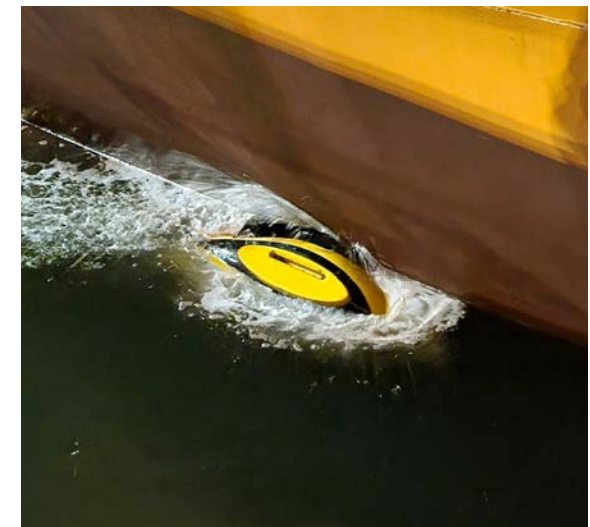
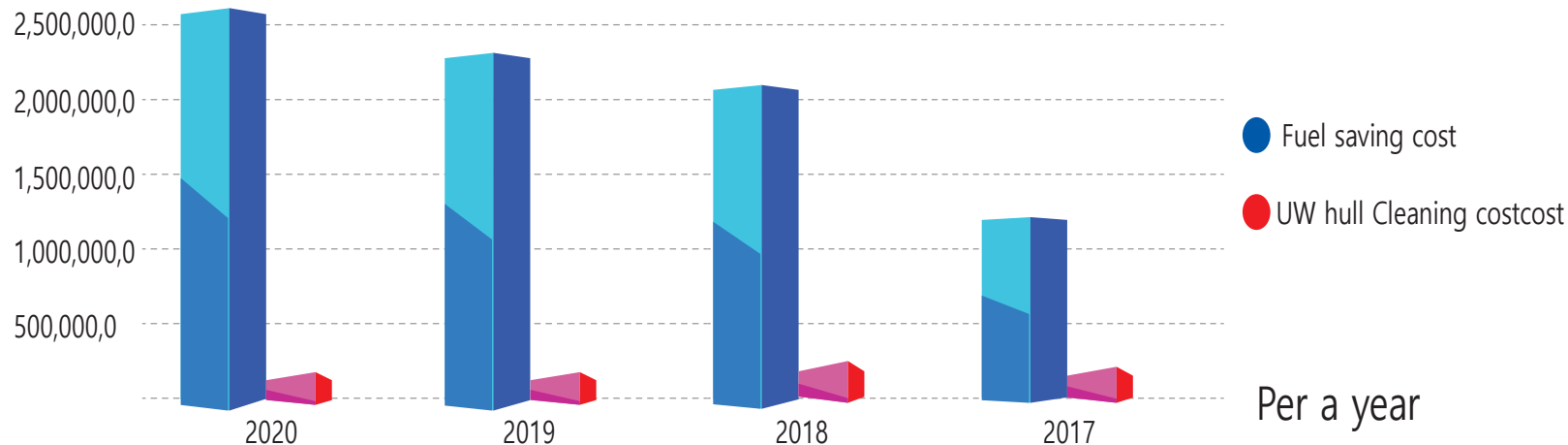


We are uniquely qualified to respond to your requirements. With our own strict training procedures and optimum facility, we deliver an effective and experienced welding team onsite made up of underwater wet welding specialist.

ROBOT CLEANING



One of the ship owner's main concerns is 'oil consumption'. Fouling accumulated on surface of ship's hull causes not only speed reduction but also low efficiency of engine. We have been striving to develop our own equipment and devices available for underwater cleaning to conduct the fast and perfect hull cleaning. Also, we have been introduced newest equipment and system from all over the world to improve our service. By using our best methodology, we complete underwater hull cleaning work within 8~15 hours. Upgrade your ship's performance efficiency with our high Quality service.



STRUCTURE INSTALLATION

We have been building strong partnership with world biggest shipbuilding companies such as HHI, SHI and DSME.

With the first installation of underwater azimuth thruster of drill ship(Mounting type 6set) in 1995, we successfully completed numbers of thruster installation for Semi Rig, Offshore plant and so on.

We also installed underwater thruster by using Habitate and all process design, manufacture, installation and supply is carried by our technology.



AZIMUTH THRUSTER UNDERWATER MOUNTING

Azimuth thruster installation is one of the most important operation part in building drill ship and semi rig because of its height and width. In the worst case scenario the failure of thruster installment will lead to dry dock creating unexpected huge expenses.

With our service, azimuth thruster could be safely installed in the water by professionally trained engineers and divers without dry dock, We promise to provide our best service with high satisfaction and strong sense of responsibility. Come to us for sage and effective cost saving.



SUBSEA HABITAT INSTALLATION



MARINE CONSTRUCTION



With our accumulated know how and wealth experience of underwater construction, we provide you with total service on the areas of bridge, port, breakwater construction.

Business area

Construction of harbor, port and shallow draft quay.

Construction of pile driving and sheet pile.

Maintenance and inspection underwater constructions and repairs.

Construction of Submarine pipe and cable.

Construction of a breakwater and TTP.

EMERGENCY RESPONSE/SALVAGE

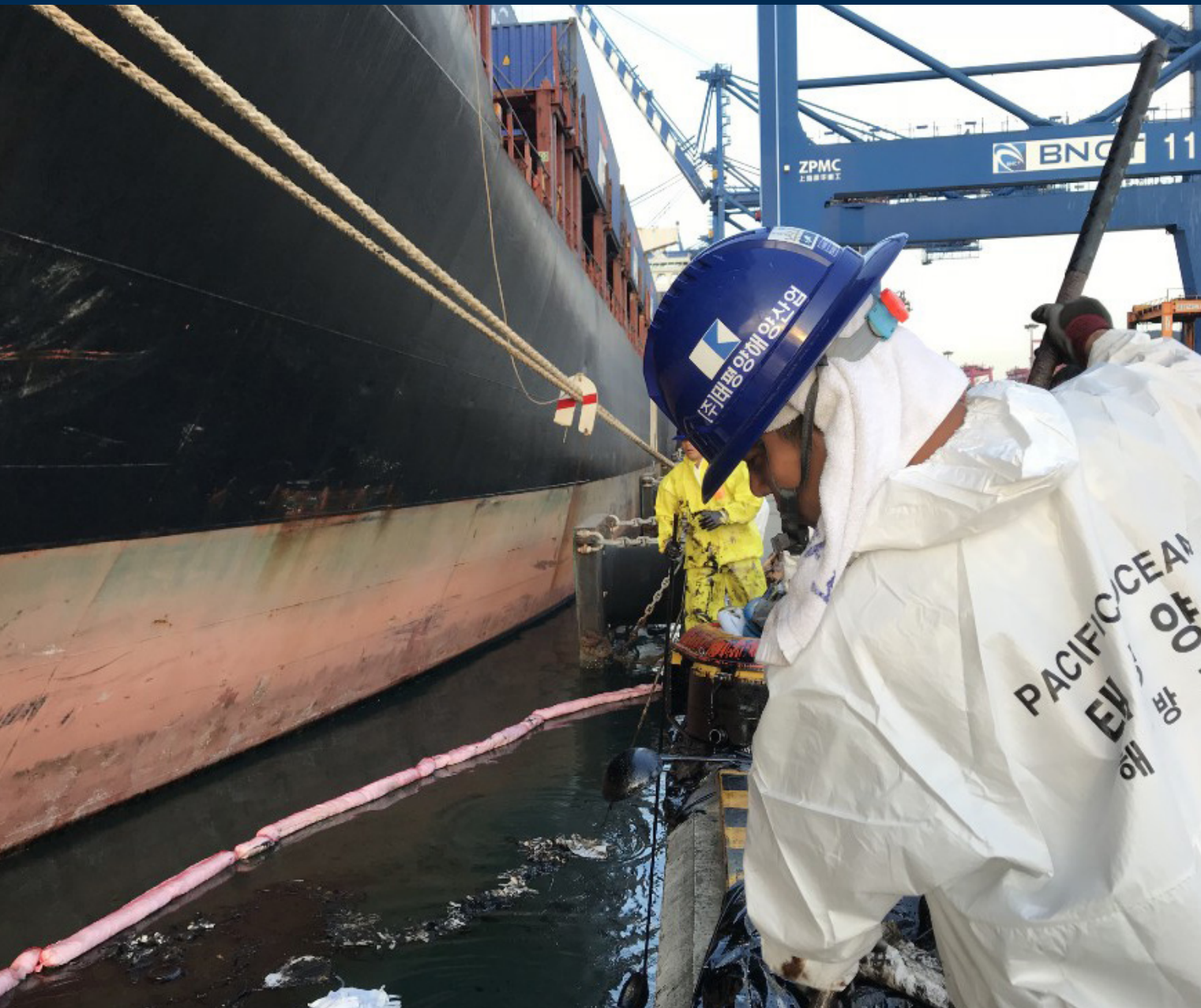
We are contributing in protecting of our clients' property not to mention of protecting & minimizing the damage to the marine environment by immediately dispatching our experienced salvage team comprised of highly trained professional divers equipped with technical salvage gears.

We are equipped with most optimized salvage equipments as well as oil spill response devices in order to response to any type of marine accident, and operating 24hours emergency response system.

We have been also built the cooperative relationship with the renowned global Salvors so as to respond to the Korean casualties that occur overseas.



OIL SPILL RESPONSE



To develop the capability to respond to marine pollution accidents and to quickly remove spilt oil in an appropriate and scientific manner, thereby minimizing economic loss to the nation and the general public, as well as minimizing the impact on the natural environment.

We cope with Oil Spill Response actively through cooperation of Ministry of Maritime Affairs and Fisheries and The Ministry of Public Safety and Security, Republic of Korea. Also, we implement Oil Removal of the ships in the accident.

OIL TANK CLEANING

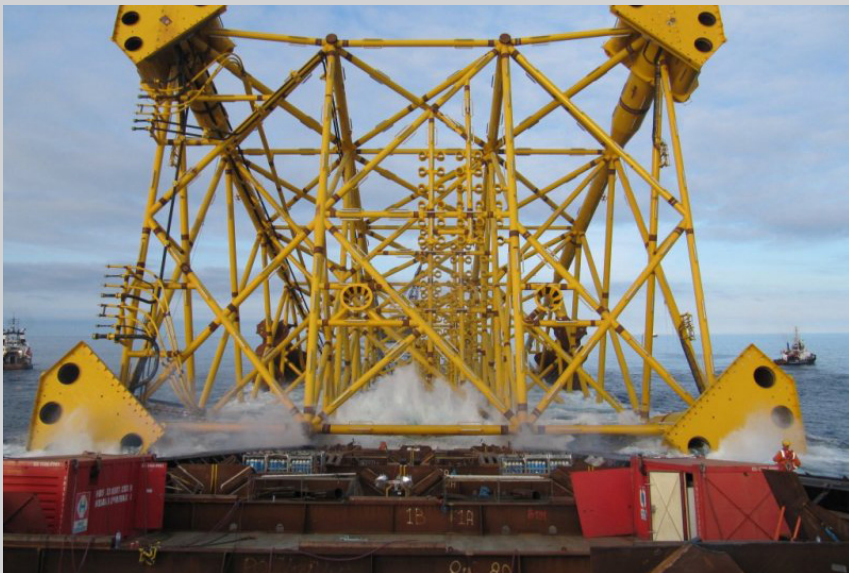


Removing oil residues & waste oil disposal from vessel

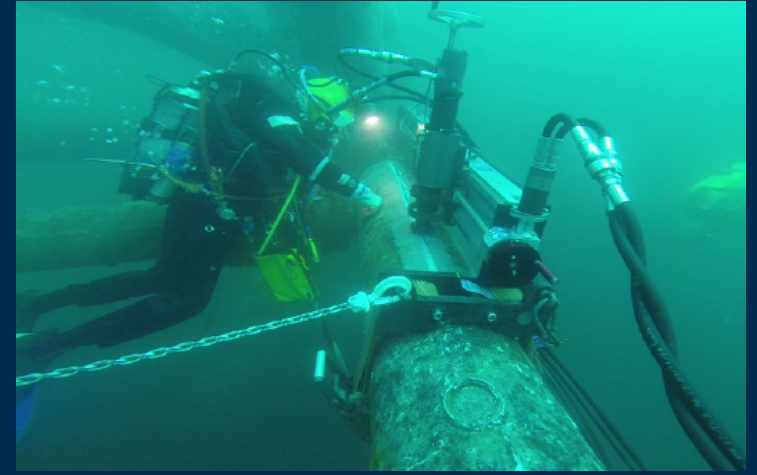
Slop disposal after the cargo tank cleaning of chemical tanker

General garbage(plastic,bottle can etc)disposal generated during ship's operation and specify waste disposal from the engine room Tank cleaning

OFFSHORE INSTALLATION

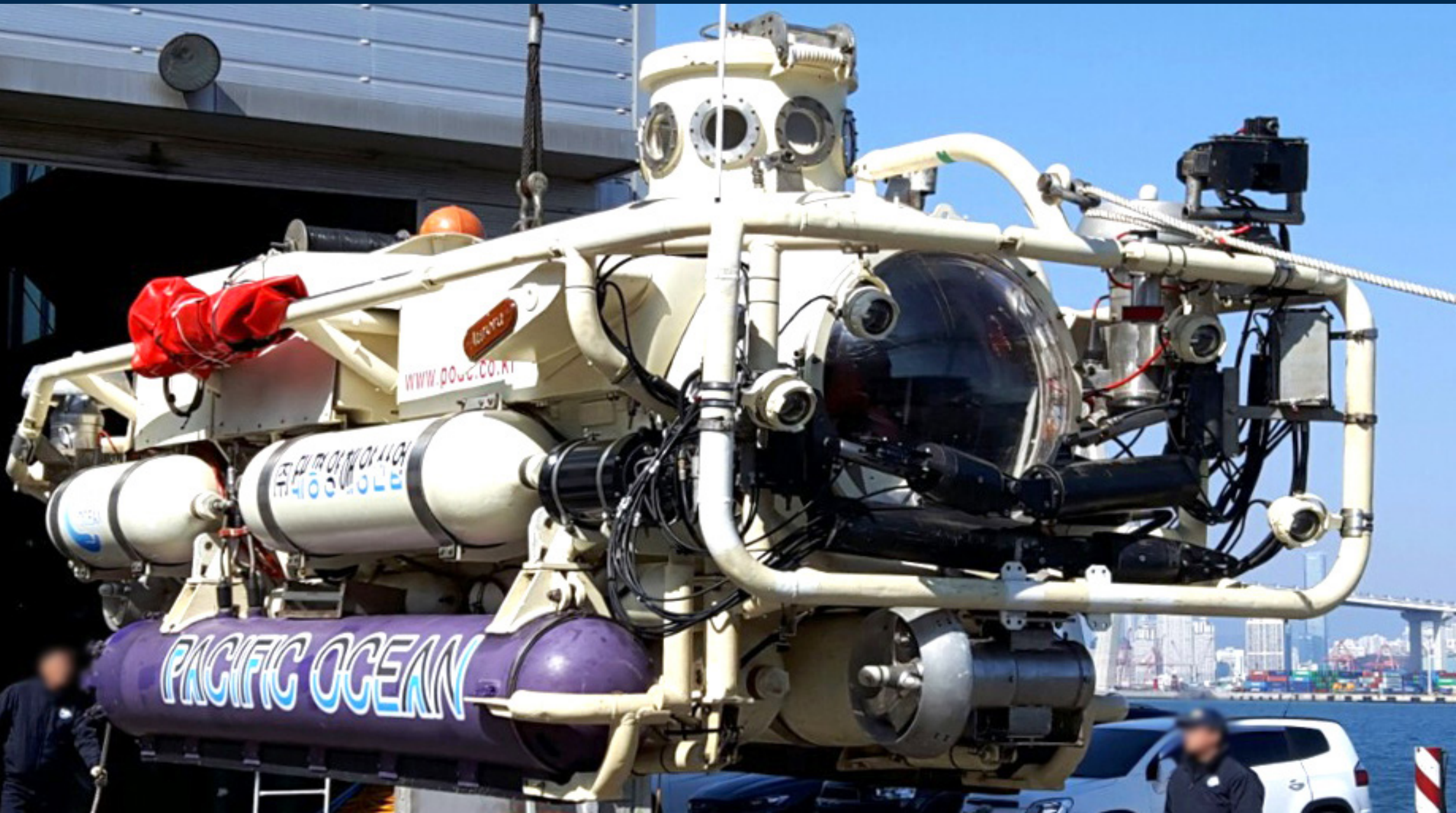


OIL PLATFORM TOTAL SOLUTION & SUBSEA MAINTENANCE



Delivers fully integrated solutions for the installation of offshore energy production facilities, whether fixed (shallow water) or floating (deep water).

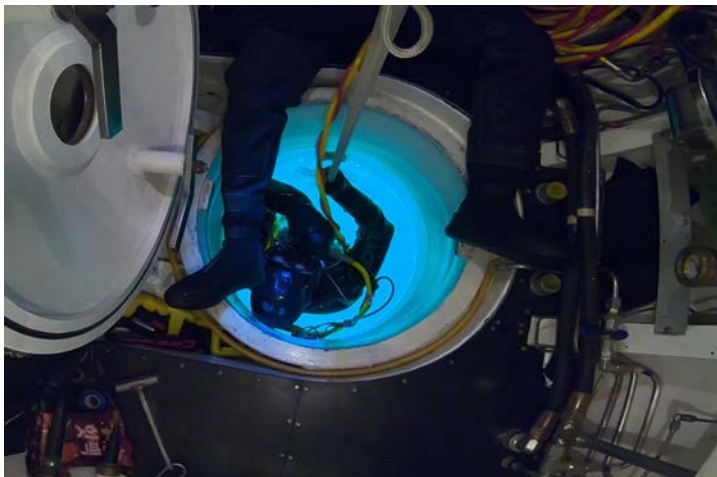
DIVER LOCK - OUT SUBMARINE



General Specification



| | |
|--------------------|------------------|
| Length | 7.7 m |
| Breadth | 2.4 m |
| Height | 2.6 m |
| Weight | 15 tons |
| Max speed | 3 knots |
| Max diving depth | 500 m |
| Passenger | 6 persons |
| Diver Lock-Out Max | 200 m |
| Duration | 10 hours |
| Max Life Support | 3 day (72 hours) |



AVAILABILITY

All commercial activities.
Scientific research.
Underwater filming <Photos>.
Search and Salvage in Deep sea.
Rescue for victim of submarine.

Our divers are regularly trained to improve their ability to react whenever, wherever and whatever the situation is. We do our best to provide best service using the newest equipment. Our experienced and professional divers are always waiting for you.



LARS(Diver Transfer Device)

COMPLETED DIVING SPREAD

With an emphasis on safety, we provide a wide range of diving services on construction, inspection, repair and maintenance.

We maintain a number of diving spread supporting complex operations at depth up to 50 meters. Diving spread could be customized to meet client's requirements.

Also, we have capabilities to conduct multiple operations simultaneously.

These spreads come complete with mix gas system, decompression chamber, launch and recovery system and equipment container.



HEAD OFFICE

Our head office is located in Yeongdo, Busan. As PODC is located on the seashore, it is possible to put into underwater works more quickly.

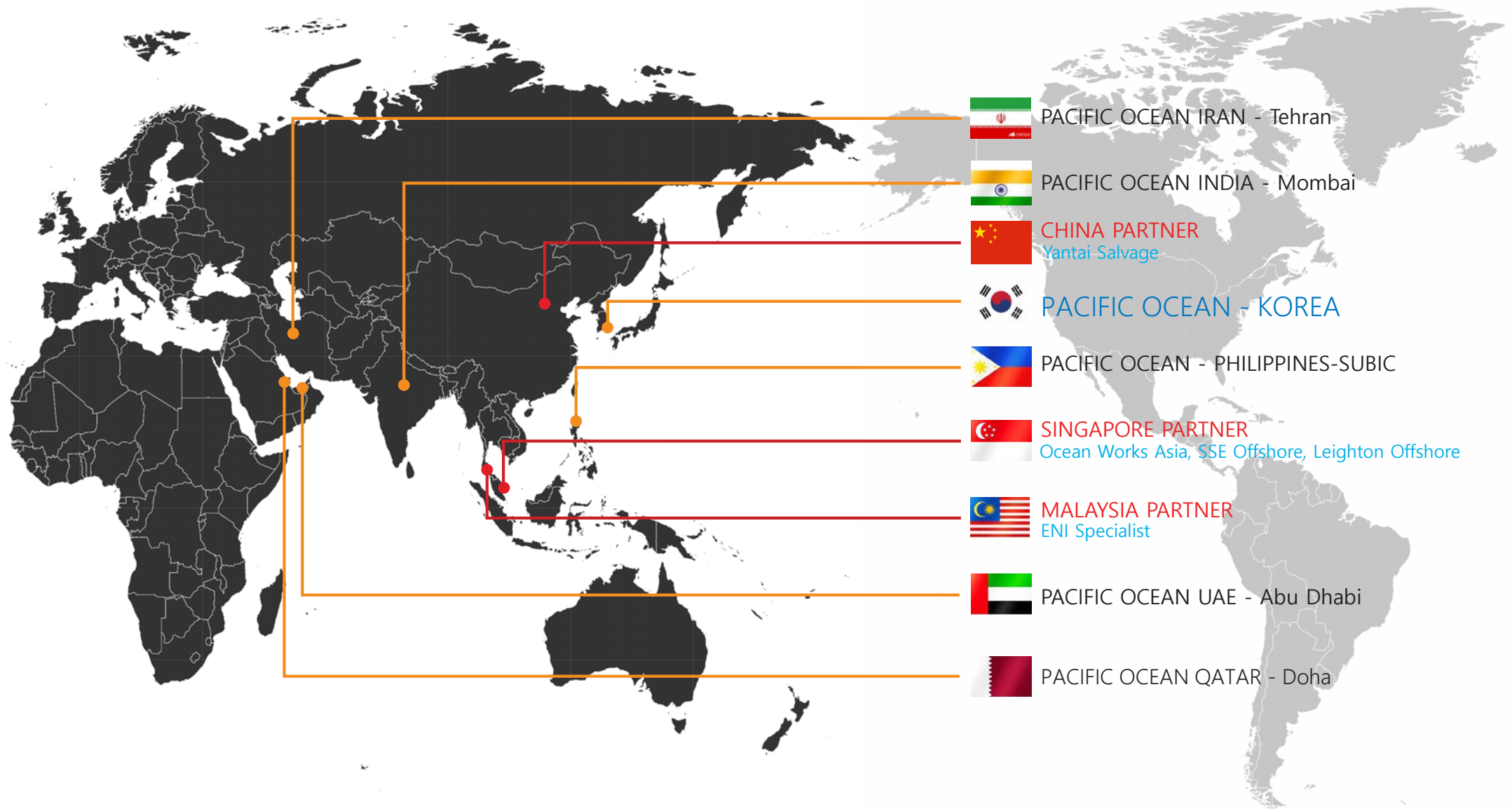


OVERSEAS BRANCH

Have established our branch offices which have the highest growth potential in ASEAN and Middle east.

Also, Divers consist of a Korean Manger and local employees strive to provide best service to our clients through hard training and extensive experience.

We take first step to become a leading global company in this field.



A large red and white crane, the Pacific Ocean 500, is mounted on a barge in a harbor. The crane's boom is extended upwards and to the left, with two yellow hoists visible. The background shows a busy port with other cranes, ships, and a city skyline under a clear blue sky.

PACIFIC OCEAN 500

Main Crane(Main Hoist)

| | |
|------------------|---------------------|
| Lifting Capacity | 500 ton |
| Outreach | 35m |
| Lifting Height | 81m(above ea level) |
| Lifting Speed | 1.0/min |



2005 PACIFIC OCEAN

- SHIP NAME : 2005 PACIFIC OCEAN
- GROSS TONNAGE : 271TON
- MAIN ENGINE : NIIGATA 750 HP X 2UNITS
- GENERATOR : 160HP / 120KVA X 2UNITS
- LxWxD : LENGTH : 41.89M
WIDTH : 9.00M
DEPTH : 3.25M





2002 PACIFIC OCEAN

- SHIP NAME :2002 PACIFIC OCEAN
- GROSS TONNAGE : 102TON
- MAIN ENGINE : 470HP X 2UNITS
- GENERATOR : 150HP/ 112KVA
- LxWxD : LENGTH : 24.84M
WIDTH : 12.40M
DEPTH : 2.50M







PACIFIC OCEAN BARGE

·SHIP NAME :PACIFIC OCEAN
·GROSS TONNAGE : 2841TON
·LxWxD : LENGTH : 67.2M
WIDTH : 32M
DEPTH : 4M

PACIFIC OCEAN

- SHIP NAME : PACIFIC OCEAN
- GROSS TONNAGE : 30 TON
- MAIN ENGINE : 480HP
- GENERATOR : 150HP/ 112KVA x 2UNITS
- LxWxD : LENGTH : 19.78m
WIDTH : 4.60M
DEPTH : 2.20M





<http://www.podc.co.kr>



diver@podc.co.kr



HEAD OFFICE

32, Haeyang-ro 117beon-gil, Yeongdo-gu,
Busan, Republic of Korea



++8251-414-9300



++8251-413-0234



BRANCH OFFICE (PHILIPPINES)

Unit W15 Wow World Bldg, Rizal Hwy, Subic Bay
Freeport Zone, Zambales, Philippines



++63-047-252-9754



BRANCH OFFICE (ABU DHABI)



++971-56-800-1318