

# FISH PROCESSING SYSTEM **CM KOREA**

## **Craft & Machinery**

Manufacture and Repair Fish & Crab Processing  
Equipment Design and Install Fishery Equipment & Conveyor  
for Factory Automation



## **CRAB CATCHING & PROCESSING EQUIPMENT**



SUNJIN ENTECH CO.,LTD.

SUNJIN JONGHAP CO.,LTD.

SUNJIN SHIPBUILDING CO.,LTD.



CM KOREA



HYDRO KOREA CO.,LTD.

# INDEX

1

OVERVIEW

2

CONVERSION HISTORY

3

CONVERSION PERFORMANCE

4

CATCHING EQUIPMENT

5

PROCESSING EQUIPMENT

6

WORK SCHEDULE

7

LAY OUT FOR RUSSIAN CRAB

# OVERVIEW – «CM Korea»



Company	CM KOREA (SUNJIN group)	C.E.O.	Jae-Chul Kim
Address	11, Gamcheonhang-ro 405 beon-gil, Saha-gu, Busan, Korea		
Tel. / FAX	+82) 10-9972-1443 Максим Ли / +82) 51-262-3520		
Int.site	<a href="http://www.sunjincmk.com">www.sunjincmk.com</a>	E-mail	maxim.lee@sunjincmk.com
Employeer	- 50person / 250 person in holding company		

# OVERVIEW – Общая информация о компании

«**CM KOREA Co., Ltd.**» is the leading provider of advanced equipment, systems and services to the fish processing industries.

We manufacture on on-board and in-house systems and equipment including Crab Processing Equipment and Crab catching machines.

SERVICE	<ul style="list-style-type: none"><li>❖ MANUFACTURE AND REPAIR PROCESSING EQUIPMENT</li><li>❖ MANUFACTURE AND REPAIR CRAB PROCESSING EQUIPMENT</li><li>❖ MANUFACTURE AND REPAIR CONVEYOR SYSTEM</li><li>❖ REPAIR AND INSTALL FISH MEAL PLANT</li><li>❖ DESIGN &amp; MANUFACTURE FISHERY EQUIPMENT</li><li>❖ DESIGN &amp; MANUFACTURE CRAB CATCHING EQUIPMENT</li></ul>
---------	--



# OVERVIEW - FACILITY



# OVERVIEW - FACILITY



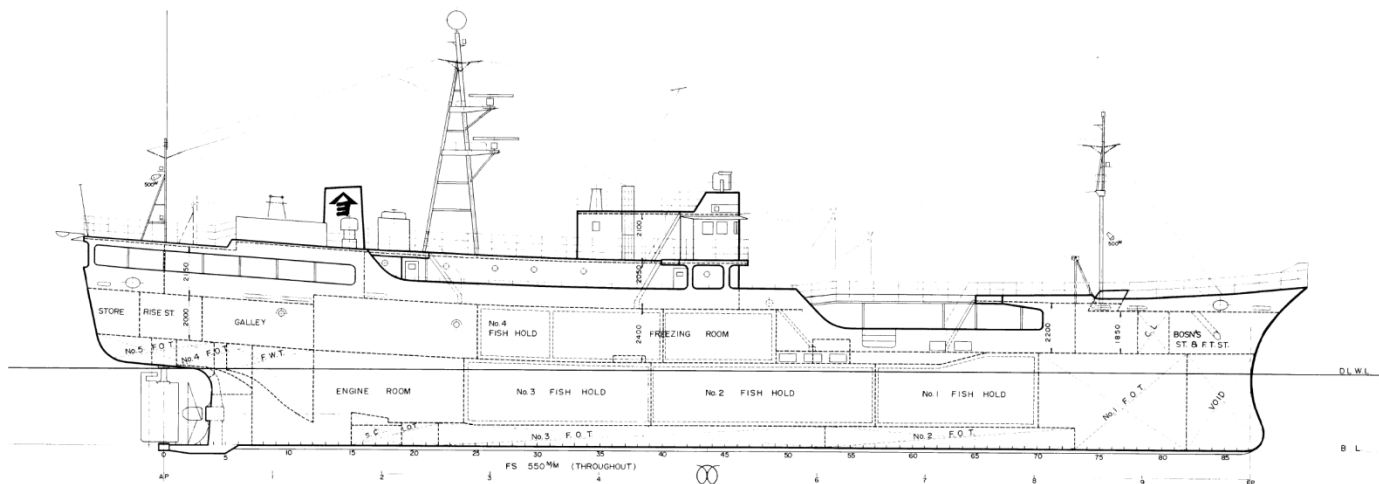
# OVERVIEW – FACILITY

## 1. ABUNDANT MANPOWER

Welding Dept.	Factory Manager	Lee, Pan-Jae	Welder experience : 21 years
	Staff	Han, Cheon-man	Welder experience : 20 years
	Staff	Gang, Hyeon-Seok	Welder experience : 15 years
	Staff	Hyeon,Ju-Hoo	Welder experience : 12 years
	Staff	Hwang, Hun-Seok	Welder experience : 10 years
	Staff	Lee, Deuk-Yeong	Welder experience : 8 years
Mechanic Dept.	Section Chief	Kim, Tae-Seong	Boarding career : 12years
	Staff	Kim, Yeong-Hui	Boarding career : 10years
	Staff	Sin, Jong-Guk	Machinery repair experience : 11years
	Staff	Lee, Yong-Man	Machinery repair experience : 7years
	Staff	Lee, Woo-Jin	Machinery repair experience : 2years
	Staff	Kang, Dae-Geon	Machinery repair experience : 8years
Machinery Dept.	Assistant Section Chief	Kim, Sun-Bong	experience : 25years



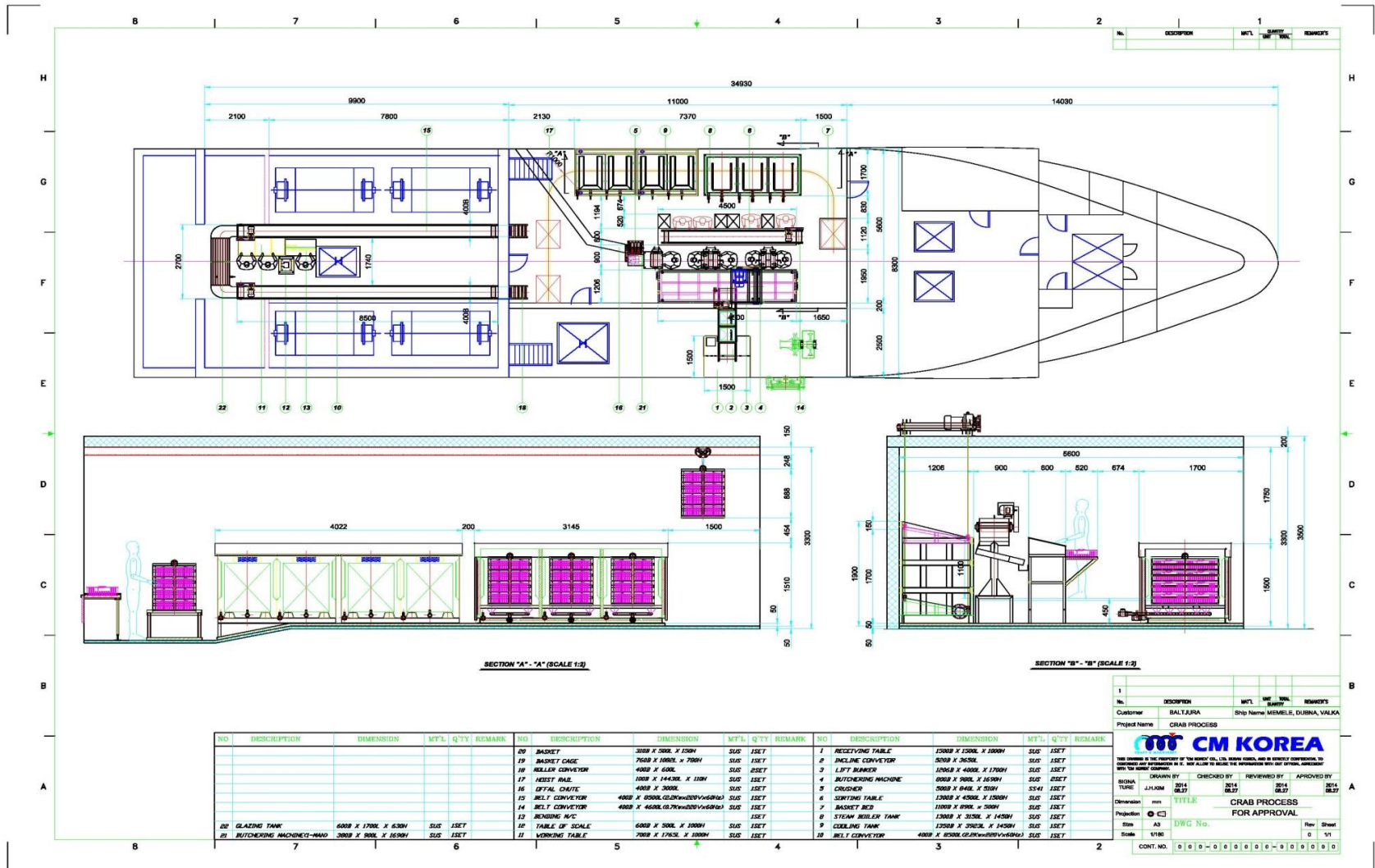
# CONVERSION HISTORY



YEAR	VESSEL	COMPANY	Repair Amount	FABRICATE AND INSTALL
2014	MEMELE	BALTJURA	\$260,000	PROCESSING EQUIPMENTS - LIFT BUNKER, BOILER, COOLING TANK, CONVEYOR, CRUSHER
2015	VALVK, DUBNA	BALTJURA	\$260,000	PROCESSING EQUIPMENTS - LIFT BUNKER, BOILER, COOLING TANK, CONVEYOR, CRUSHER
2016	POSEIDON	M.F.I	\$654,000	PROCESSING EQUIPMENTS FABRICATE AND INSTALL
2018	KNYAZ VLADMIR	HYUNSEUNG	\$140,000	CRAB CATCHING EQUIPMENT - LIFT BUNKER, BOILER, COOLING TANK, CONVEYOR, CRUSHER
2019	ALCHAN	PRIM CRAB	\$295,534	CRAB CATCHING EQUIPMENT - LINE HAULER & WIRE WINCH & POT WINCH & PROCESSING EQUIPMENT
2020	JAGUAR	VOSKHOD	\$320,000	CRAB CATCHING EQUIPMENT - LINE HAULER & WIRE WINCH & POT WINCH

# PERFORMANCE - LAY OUT

## VALKA , MEMELE, DUBNA x 3VESSELS – BALTJURA - SERVISS



1	DESCRIPTION	MTL	QTY	REMARK
No.	BALTJURA			
Customer	BALTJURA			
Project Name	CRAB PROCESS			
<small>THIS DRAWING IS THE PROPERTY OF CM KOREA CO., LTD. NO PART HEREOF, AND IN WHOLE OR IN PART, MAY BE REPRODUCED OR TRANSMITTED IN ANY FORM OR BY ANY MEANS, WITHOUT THE WRITTEN PERMISSION OF CM KOREA CO., LTD.</small>				
SIGNATURE	DATE	CHECKED BY	DATE	REVIEWED BY
	2014.08.27		2014.08.27	2014.08.27
<b>CRAB PROCESS</b> <b>FOR APPROVAL</b>				
Dimension	mm			
Proportion	1:1			
Scale	AS			
Sheet	0 / 11			

# PERFORMANCE - M/V VALKA / CATCHING EQUIPMENT





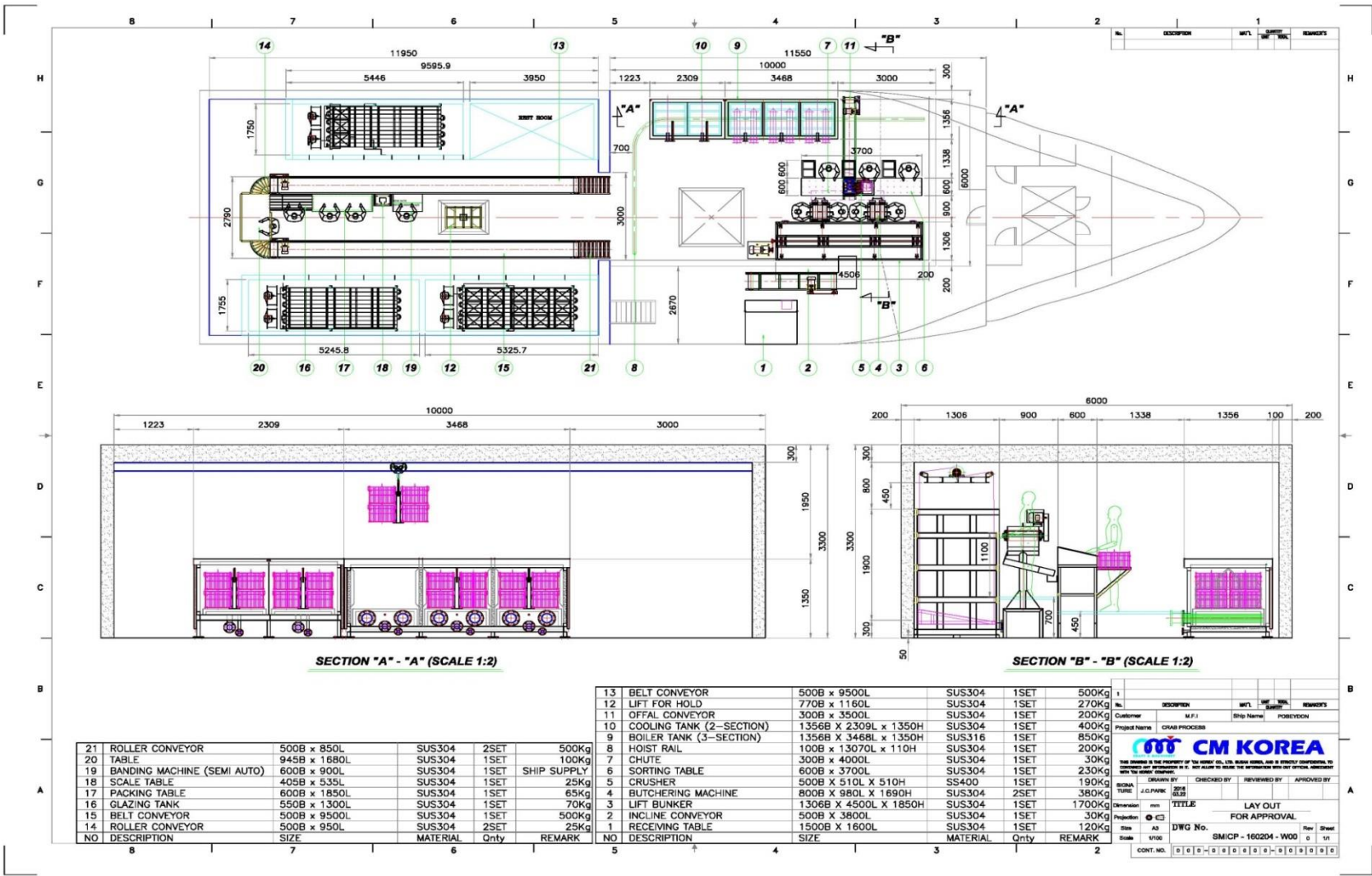
# PERFORMANCE - M/V VALKA / CATCHING EQUIPMENT





# PERFORMANCE – LAY OUT

## POSEIDON – M.F.I



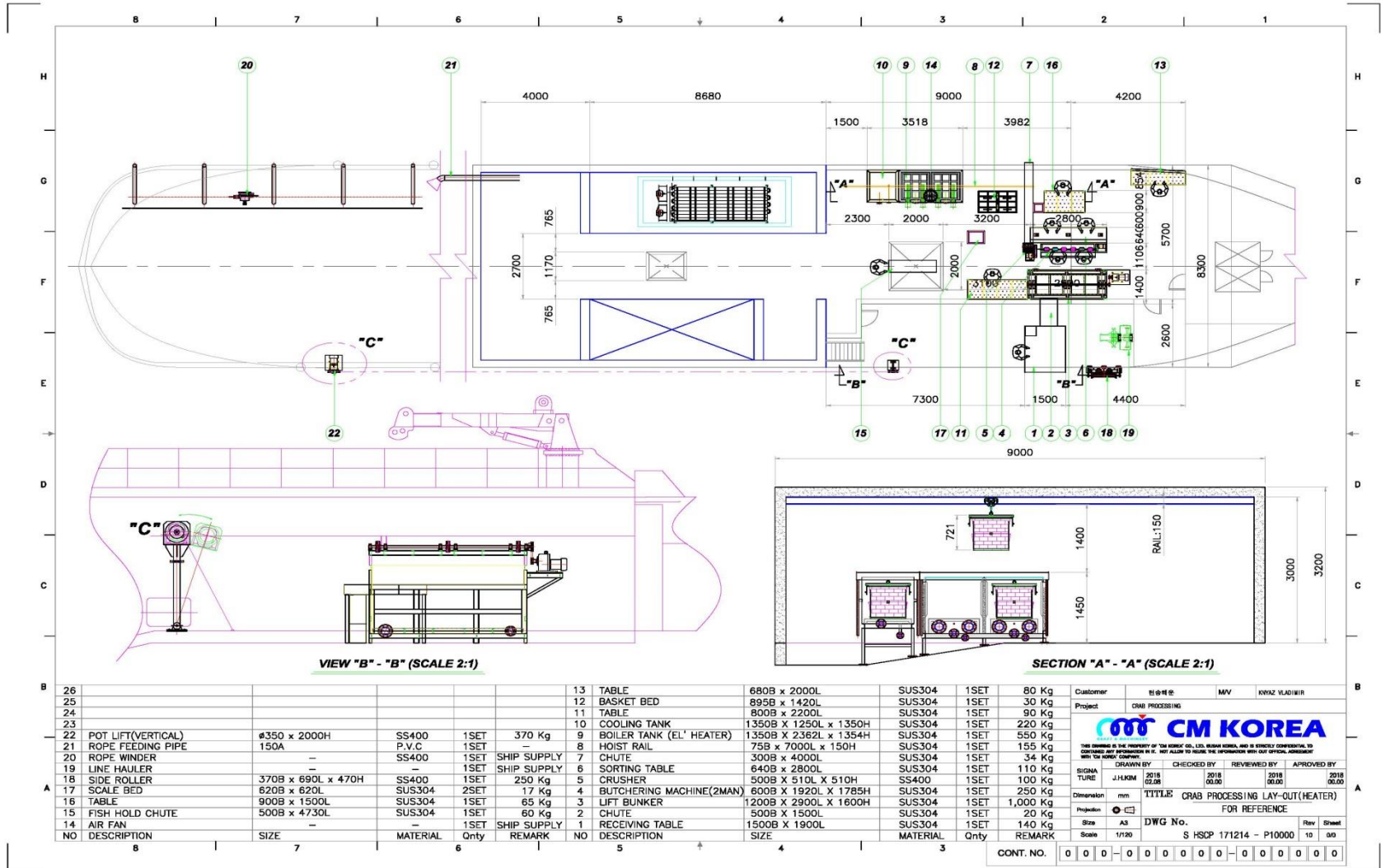
# PERFORMANCE - M/V POSEIDON / PROCESSING EQUIPMENT





# PERFORMANCE – LAY OUT

## KYNAZ VLADIMIR

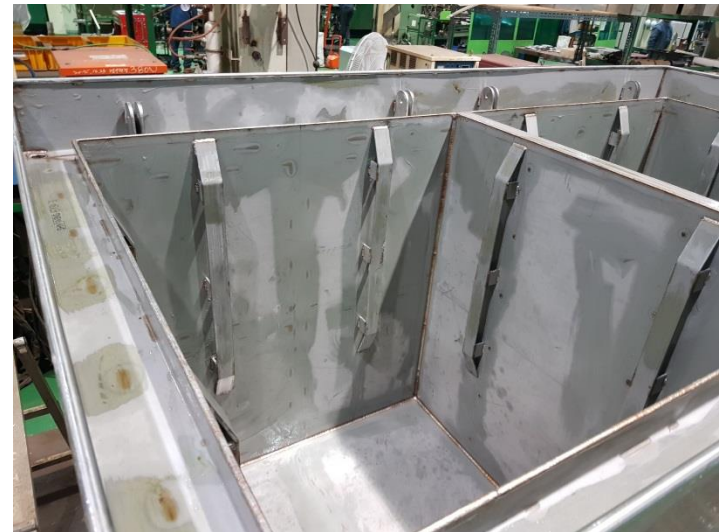


# PERFORMANCE - M/V K.VLADIMIR / CATCHING EQUIPMENT





# PERFORMANCE - M/V K.VLADIMIR/ PROCESSING EQUIPMENT



## ALCHAN – PRIM CRAB





# PERFORMANCE - M/V ALCHAN / CATCHING EQUIPMENT



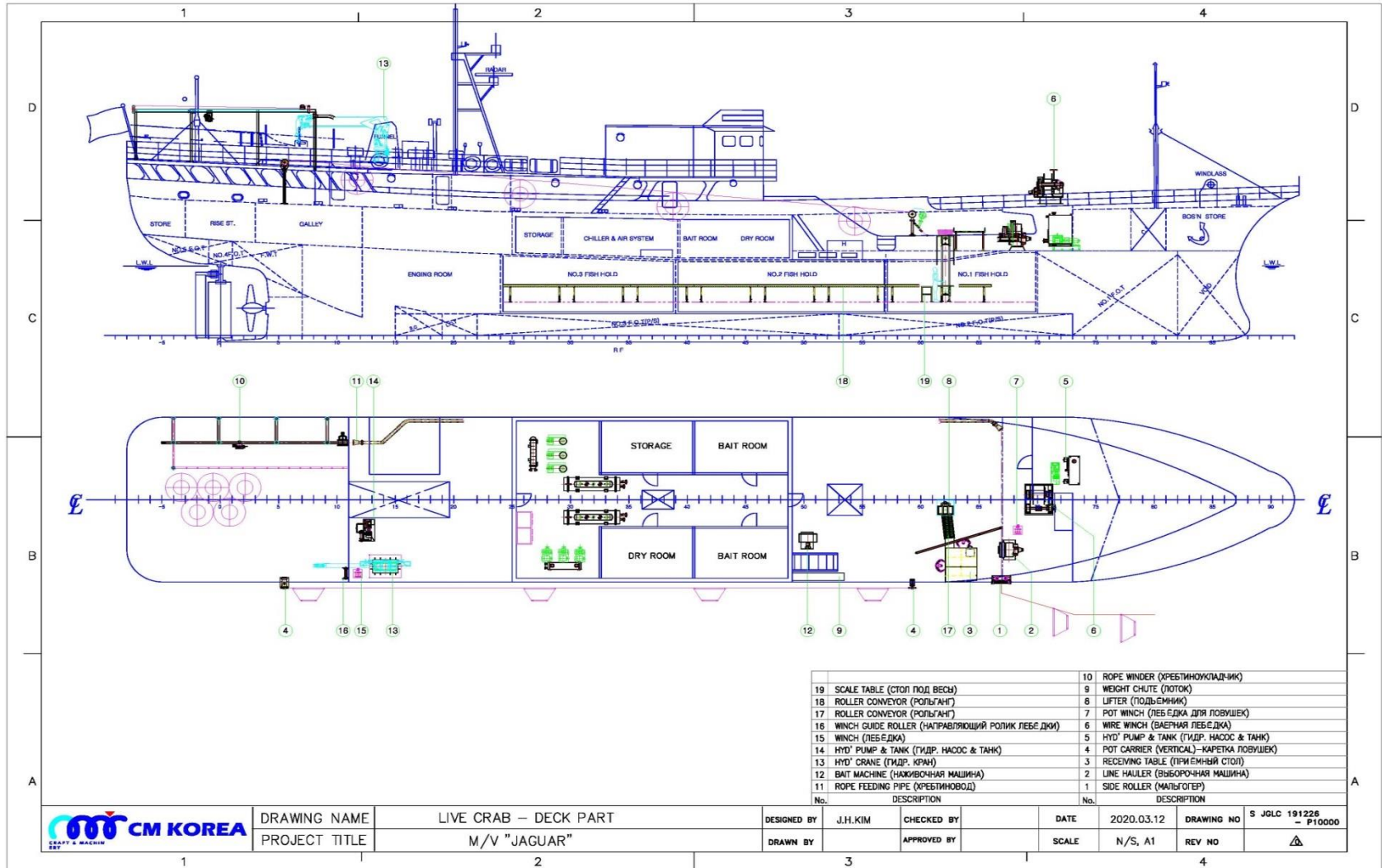


# PERFORMANCE - M/V ALCHAN / PROCESSING EQUIPMENT



# PERFORMANCE – LAY OUT

## JAGUAR - VOSKHOD



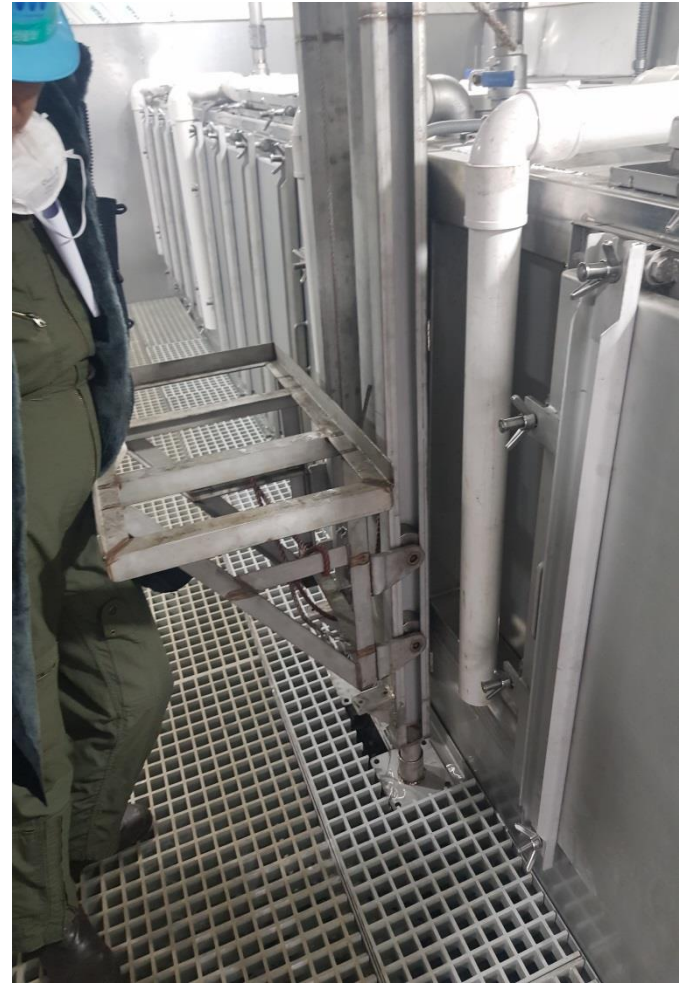
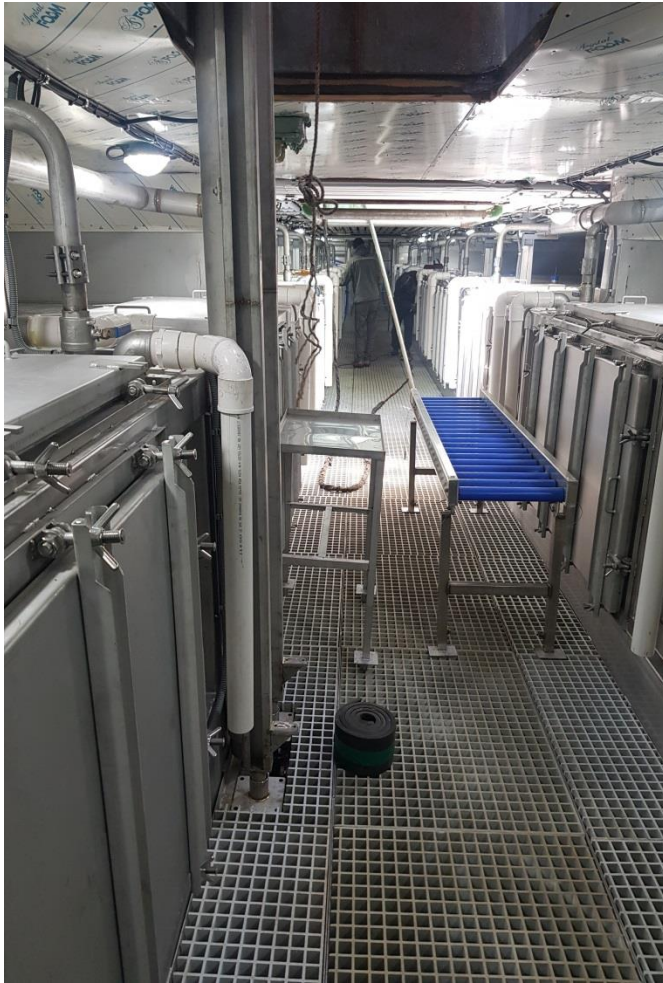


# PERFORMANCE - M/V JAGUAR / CATCHING EQUIPMENT



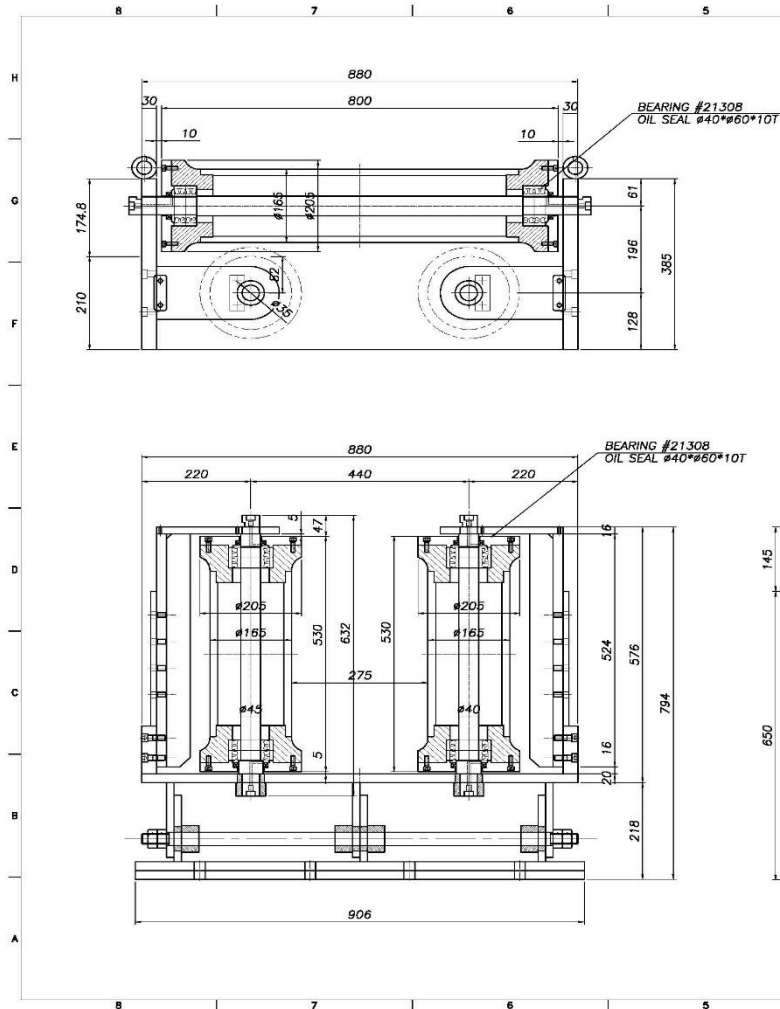


# PERFORMANCE - M/V JAGUAR / PROCESSING EQUIPMENT




# CRAB VESSEL – CRAB CATCHING EQUIPMENT

## SIDE ROLLER



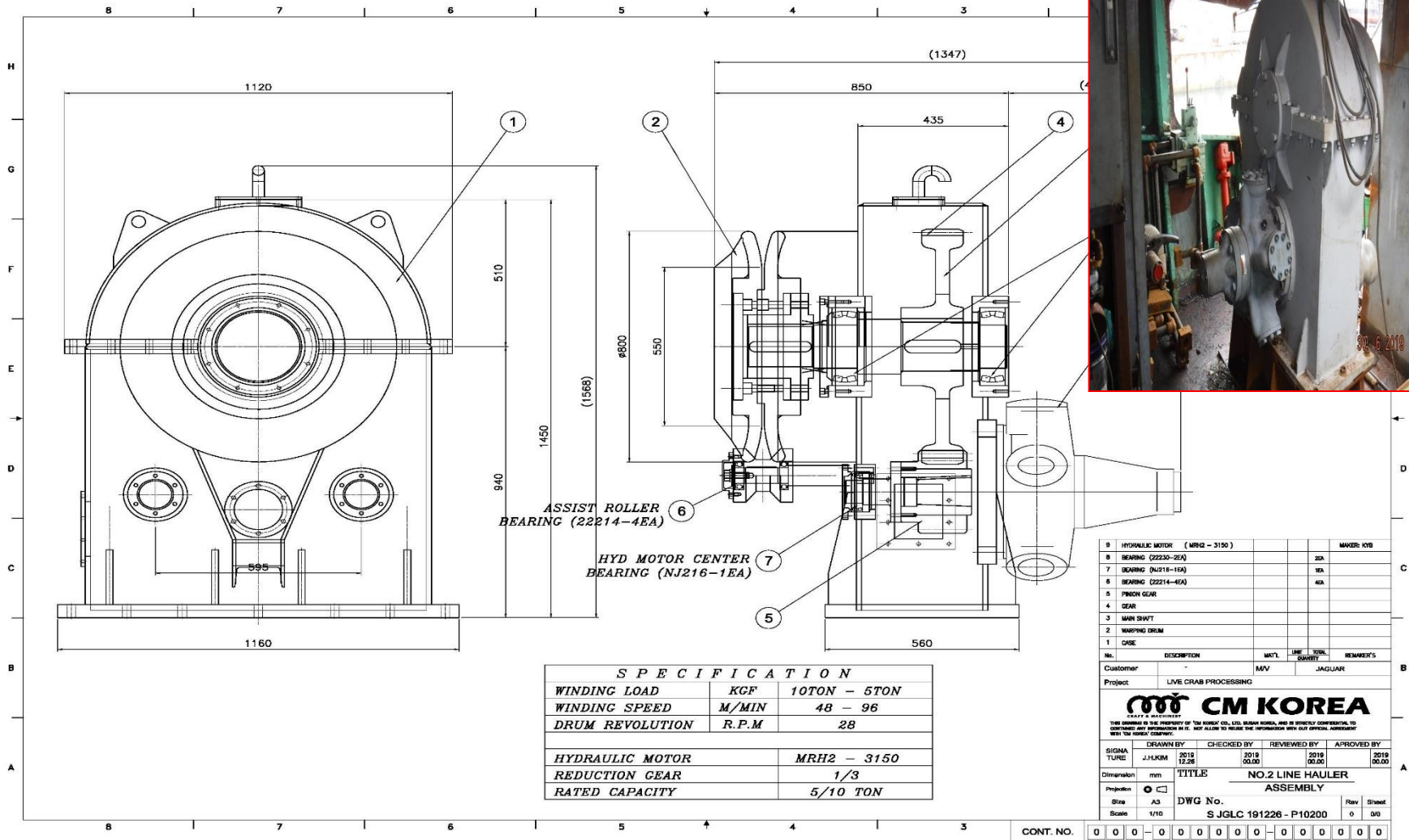
### NOTE

1. FRAME MATERIAL : SS400
2. ROLLER MATERIAL : SUS304
3. Q'TY : 1SET

1	SIDE ROLLER	SS400			
No.	DESCRIPTION	MAT'L	UNIT	QTY	REMARKS
Customer	-	M/V			JAGUAR
Project	LIVE CRAB PROCESSING				
 <b>CM KOREA</b> CRAFT & MACHINERY <small>THIS DRAWING IS THE PROPERTY OF THE KOREA CO., LTD. NO. 1000 KOREA, AND IS SUBJECT TO CONFIDENTIALITY. IT IS NOT TO BE REPRODUCED OR TRANSMITTED IN ANY FORM OR BY ANY MEANS, ELECTRONIC OR MECHANICAL, INCLUDING PHOTOCOPYING, RECORDING, OR BY ANY INFORMATION STORAGE AND RETRIEVAL SYSTEM, WITHOUT THE WRITTEN PERMISSION OF THE KOREA COMPANY.</small>					
SIGNATURE	DRAWN BY	CHECKED BY	REVIEWED BY	APPROVED BY	
	J.H.KIM	2019	2019	2019	2019
Dimension	mm	12.25	12.25	12.25	12.25
NO.1 SIDE ROLLER					
ASSEMBLY					
Projection	1st				
Size	A3				
Scale	1/1				
REV.	DATE	DESCRIPTION OF REVISION	APPROV		
CAD FILE NAME					
CONT. NO.	00	00	00	00	00

# CRAB VESSEL – CRAB CATCHING EQUIPMENT

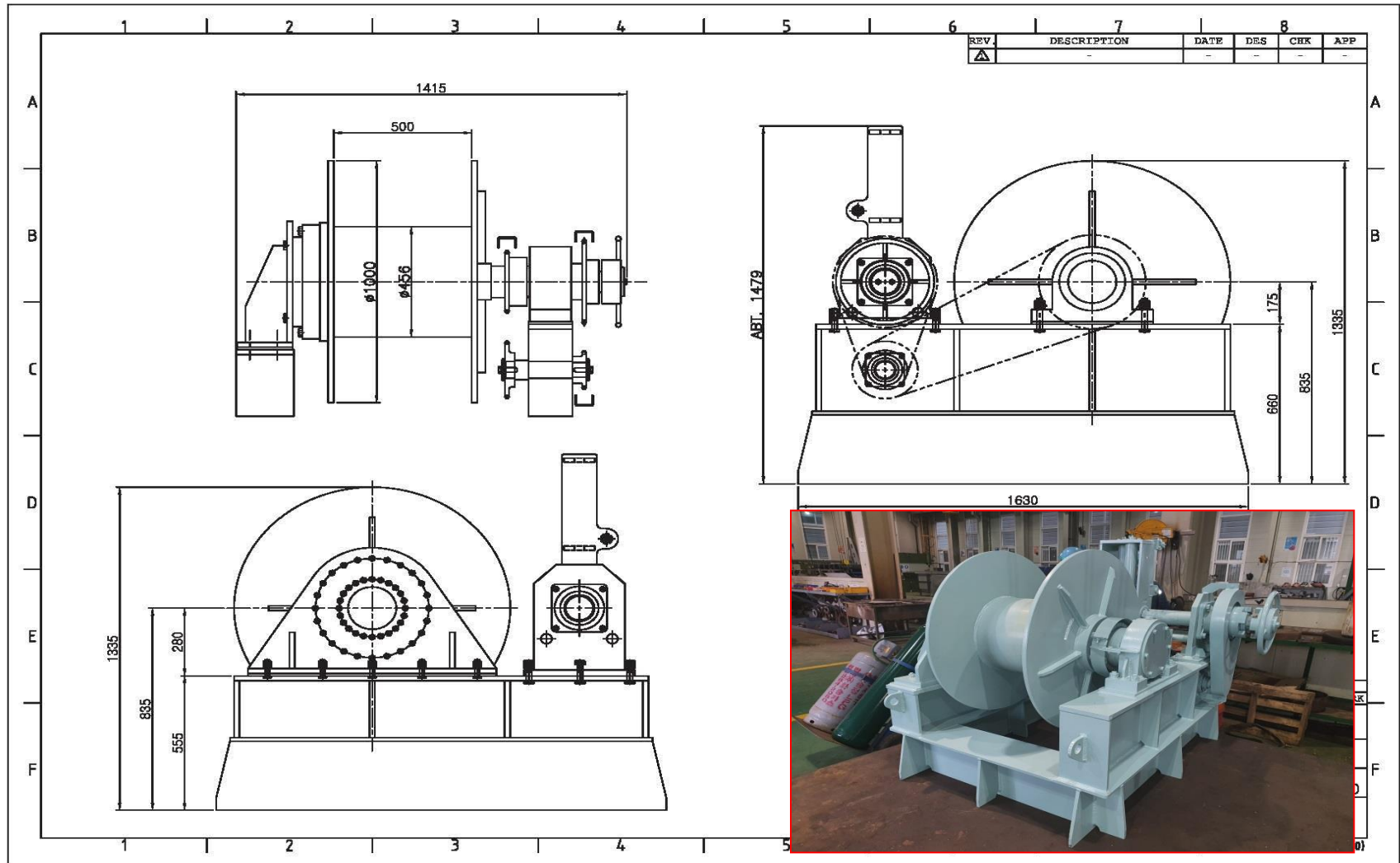
## LINE HAULER





# CRAB VESSEL – CRAB CATCHING EQUIPMENT

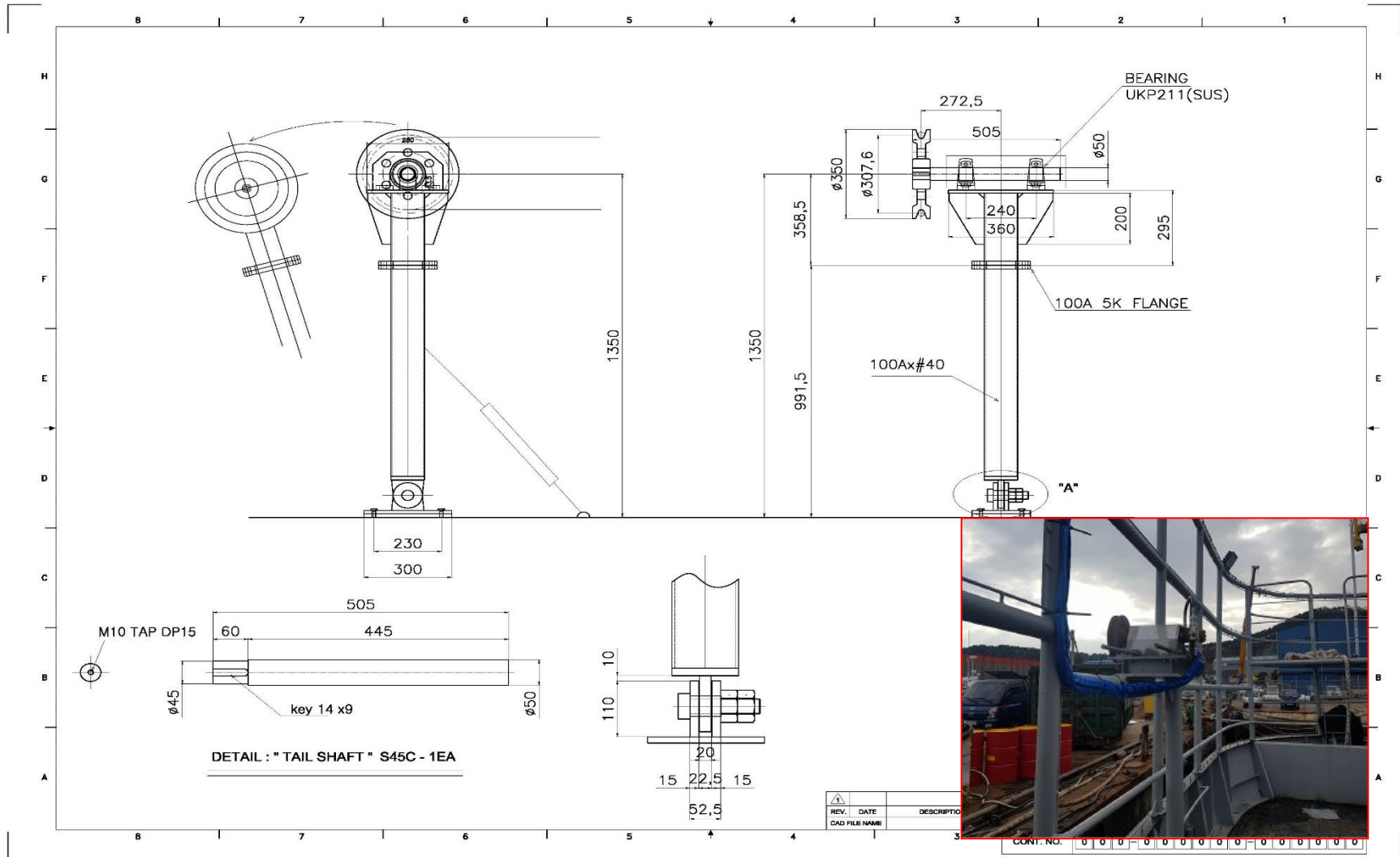
## WIRE WINCH





# CRAB VESSEL – CRAB CATCHING EQUIPMENT

## POT CARRIER

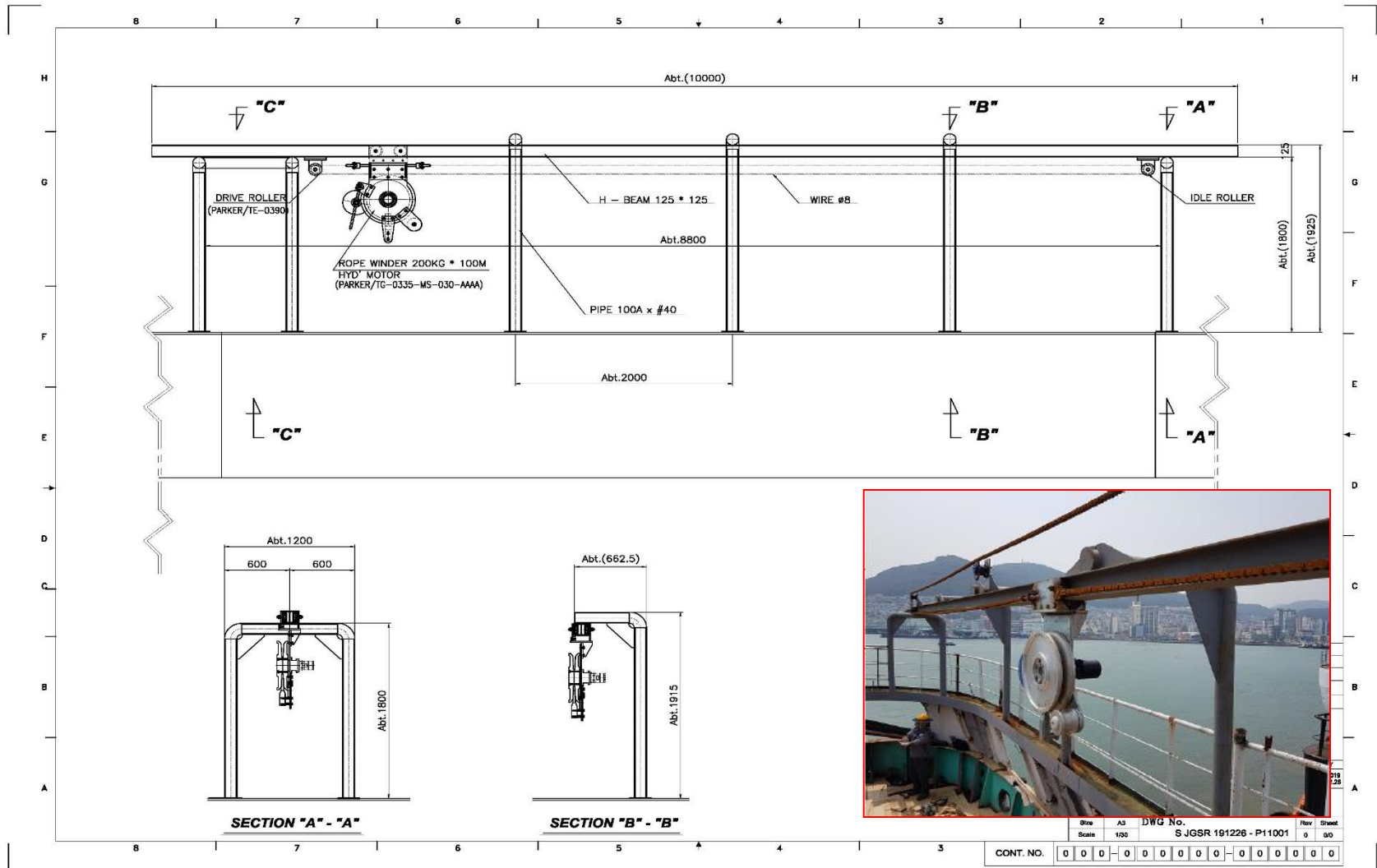


## RECEIVING TABLE



# CRAB VESSEL – CRAB CATCHING EQUIPMENT

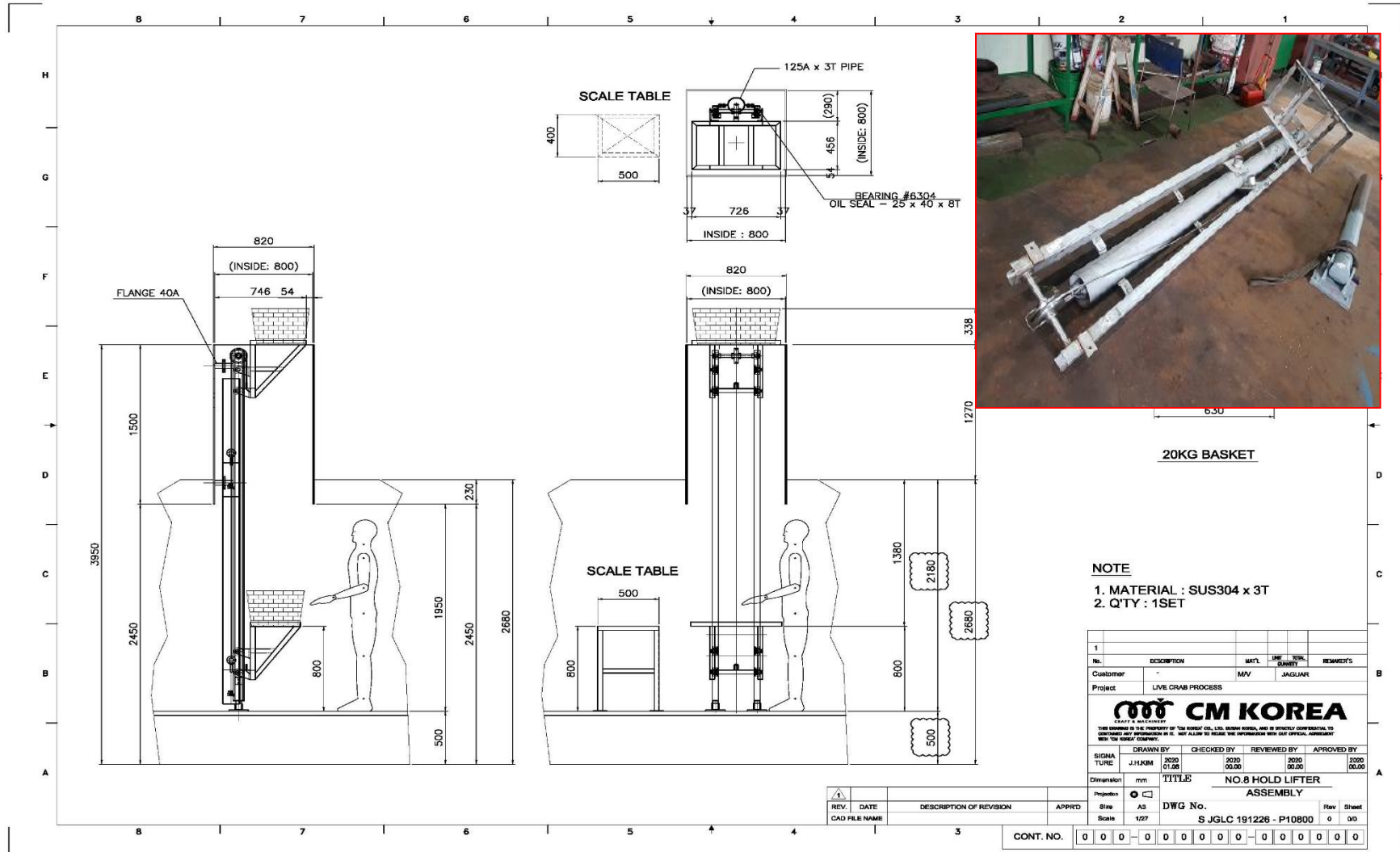
## ROPE WINDER





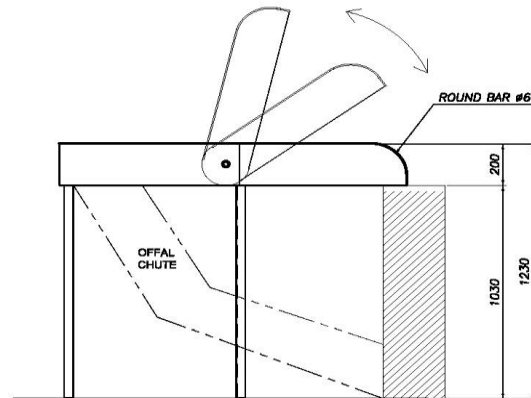
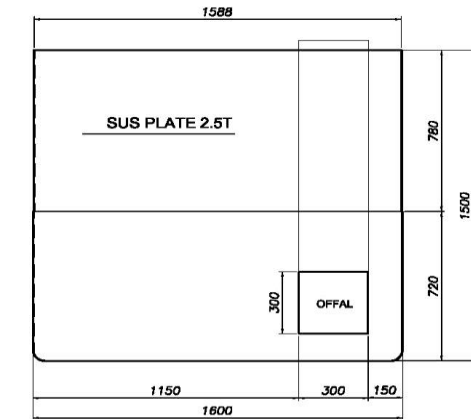
# CRAB VESSEL – CRAB CATCHING EQUIPMENT

## FISH HOLD LIFT





## RECEIVING TABLE



1	RECEIVING TABLE		SUE304	140Kg	
No.	DESCRIPTION	MAT'L	UNIT	WEIGHT	REMARKS
Customer	PRIM CRAB	M/V	WIN FAR 8588		
Project	CRAB PROCESSING				
 <b>CM KOREA</b>					
<small>CM&amp;P &amp; MACHINERY          100-700, SONGDO-DONG, SOO-KU, SEOUL 150-700, KOREA          TEL: 02-556-1000 FAX: 02-556-1001          E-MAIL: CMK@CMK.CO.KR          WEBSITE: WWW.CMK.CO.KR</small>					
DRAWN BY		CHECKED BY	REVIEWED BY	APPROVED BY	
D.W./K.M.		2018	2018	2018	2018
Date		Date	Date	Date	
2018		2018	2018	2018	
Dimension mm		TITLE NO. 1 RECEIVING TABLE			
Projection		ASSEMBLY			
PTD	Size	A3	DWG No.		
Scale	1/17	S PCSC 100412 - P10100		Rev	0/00
0	0	0	0	0	0
0	0	0	0	0	0
0	0	0	0	0	0
0	0	0	0	0	0

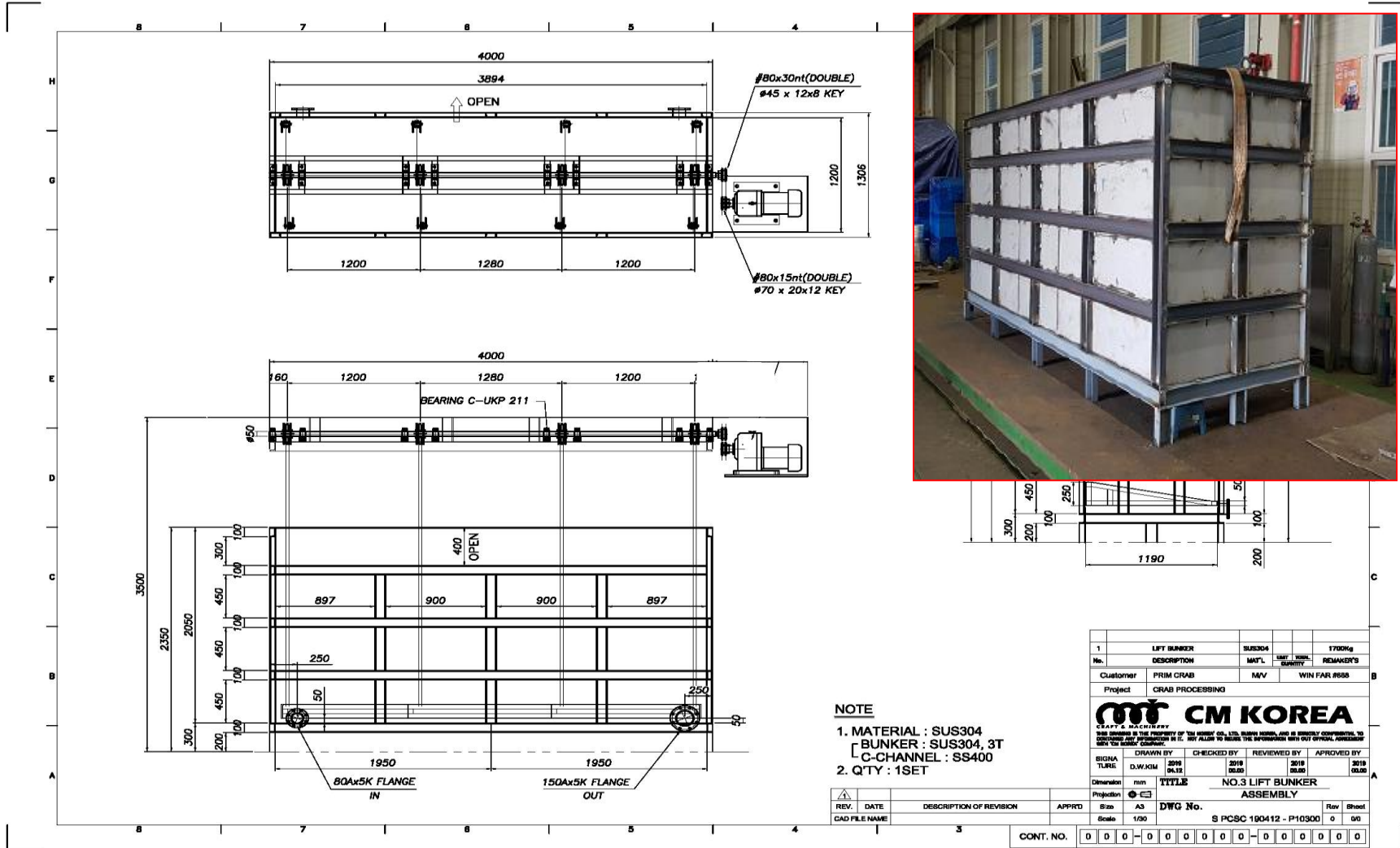
## INCLINE CONVEYOR

[illegible]



# CRAB VESSEL – CRAB PROCESSING EQUIPMENT

## LIFT BUNKER

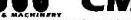




## BUTCHERING MACHINE

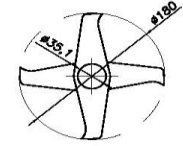
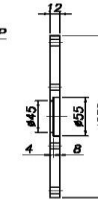
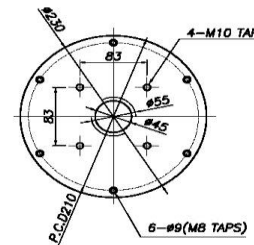
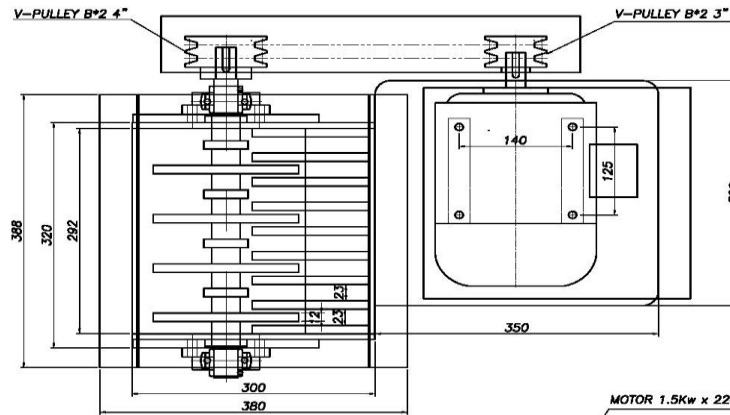


1. MATERIAL : SUS304  
2. Q'TY : 2SET

1	BUTCHERING M/C		SUS304			
No.	DESCRIPTION		MAT'L	UNIT / PACK	REMARKS	
Customer	PRIM CRAB		M/V	WIN FAR #558		
Project	CRAB PROCESSING					
 <p>CM KOREA</p> <p>CM KOREA is the PROPERTY of YOUNG KIM CO., LTD. HANGANG-KU, SEUL, KOREA AND IS STRICTLY CONFIDENTIAL. NO REPRODUCTION OR INFORMATION IS NOT ALLOWED TO BEUSE THE INFORMATION BEYOND OUR OFFICIAL PRESENTATION</p>						
DRAWN BY		CHECKED BY		REVIEWED BY		APPROVED BY
DW/KJM		2019.09.12		2019.09.12		2019.09.12
Denomination		NO.4 BUTCHERING M/C				
Proportion		ASSEMBLY				
Size		A3				
Scale		1/15				
DWG No.		S PCSC 180412 - P104000				
Rev						Sheet
0	0	0	0	0	0	0/0



## OFFAL CRUSHER



### DETAIL OF KNIFE

### DETAIL OF COVER

1. MATERIAL : SS400  
2. Q'TY : 1SET  
3. SPEED-1000 RPM

1	CRUSHER		SS400	100kg
No.	DESCRIPTION	MAT'L	UNIT QUANTITY	REMARKS
Customer	PRIM CRAB	MOV	WIN FAN #55	
Project	CRAB PROCESSING			
 <b>CM KOREA</b> <small>CRAP &amp; MACHINERY</small>				
<small>THIS DRAWING IS THE PROPERTY OF THE MASTER CO., LTD. SUPPLY MACHINERY, AND IS STRICTLY CONFIDENTIAL. TO BE KEPT SECRET AND NOT TO BE ALLOWED TO REPRODUCE THE INFORMATION HEREIN WITHOUT THE WRITTEN PERMISSION OF THE MASTER CO., LTD.</small>				
DRAWN BY		CHECKED BY	REVIEWED BY	APPROVED BY
BONG TUNG		2018	2018	2018
09.10.18		09.10	09.10	09.10
Dimension		mm		TITLE
				NO. 5 CRUSHER
Production				ASSEMBLY
Size	A3	DWG No.		Rev
Scale	1/5	S PCSC 190412 - P10500		Sheet

						Projection				ASSEMBLY									
REV.	DATE	DESCRIPTION OF REVISION			APPROD	Size	A3	DWG No.								Rev	Sheet		
CAD FILE NAME							Scale	1/5				\$ PCSC 190412 - P10500					0	00	

## CRAB BOILER

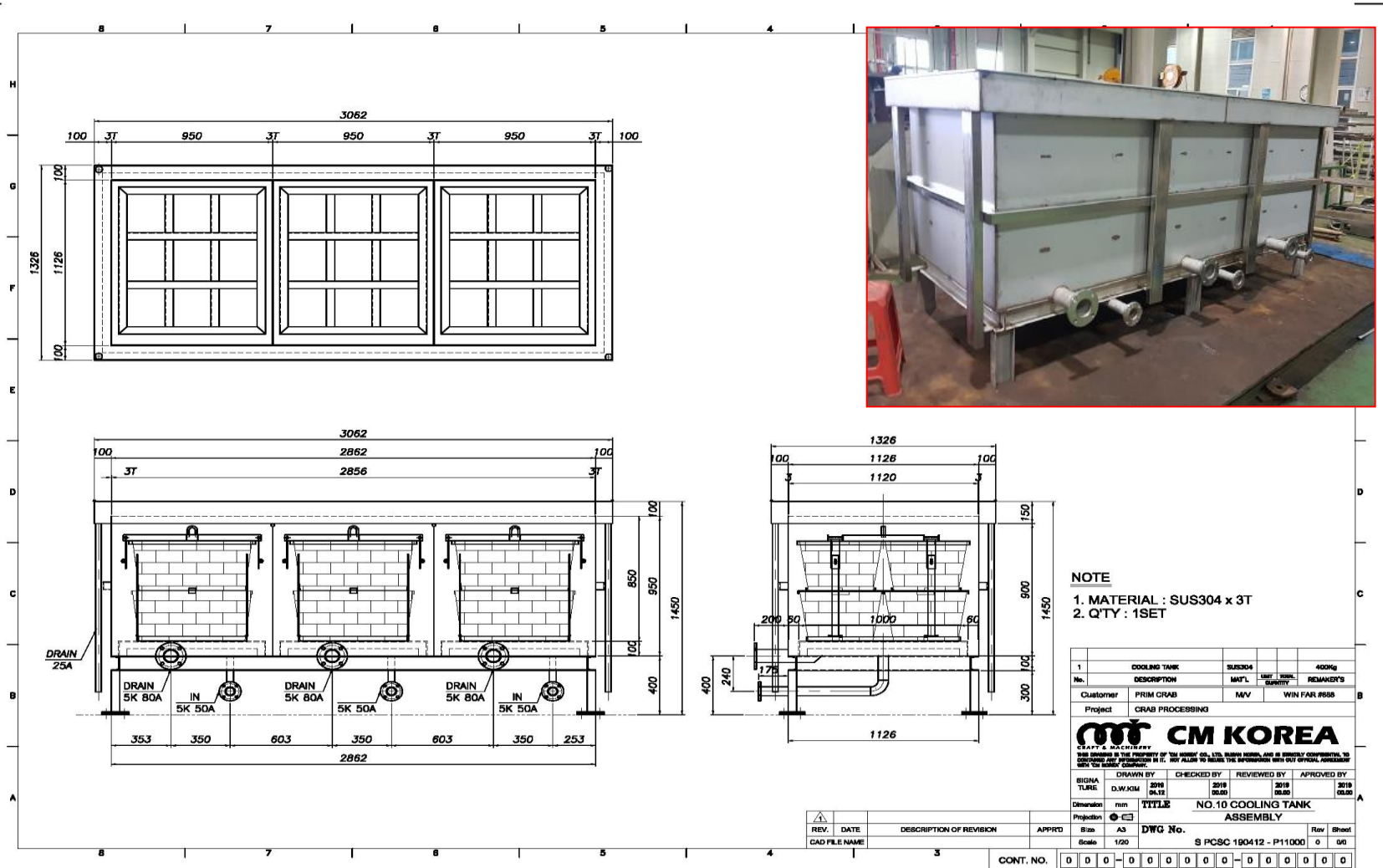


1. MATERIAL  
[ HEATER TANK : SUS316 4T  
ANGLE, PIPE, CANNEL & S.Q PIPE : SUS304  
2. Q'TY : 1SET

[illegible]

# CRAB VESSEL – CRAB PROCESSING EQUIPMENT

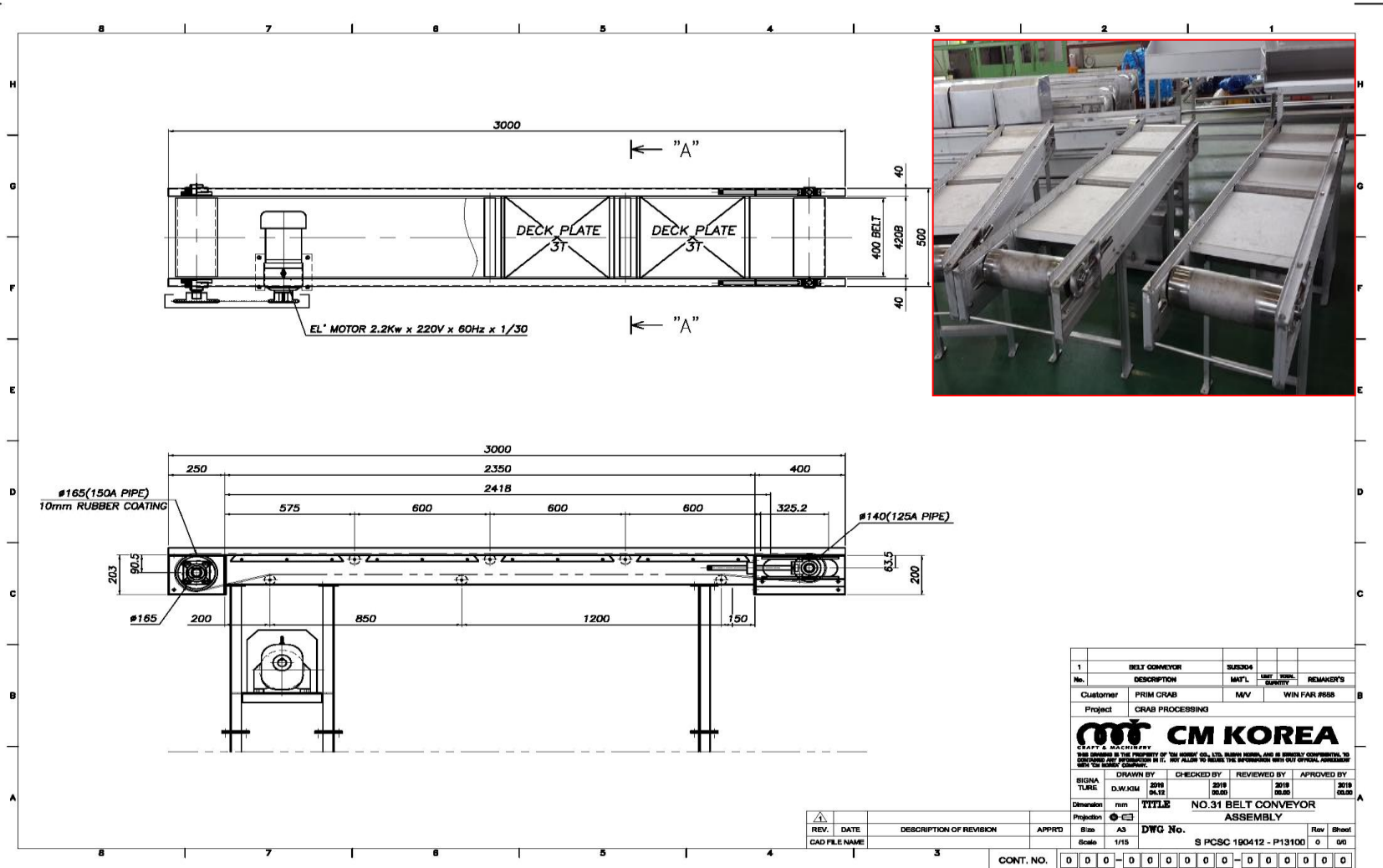
## COOLING TANK





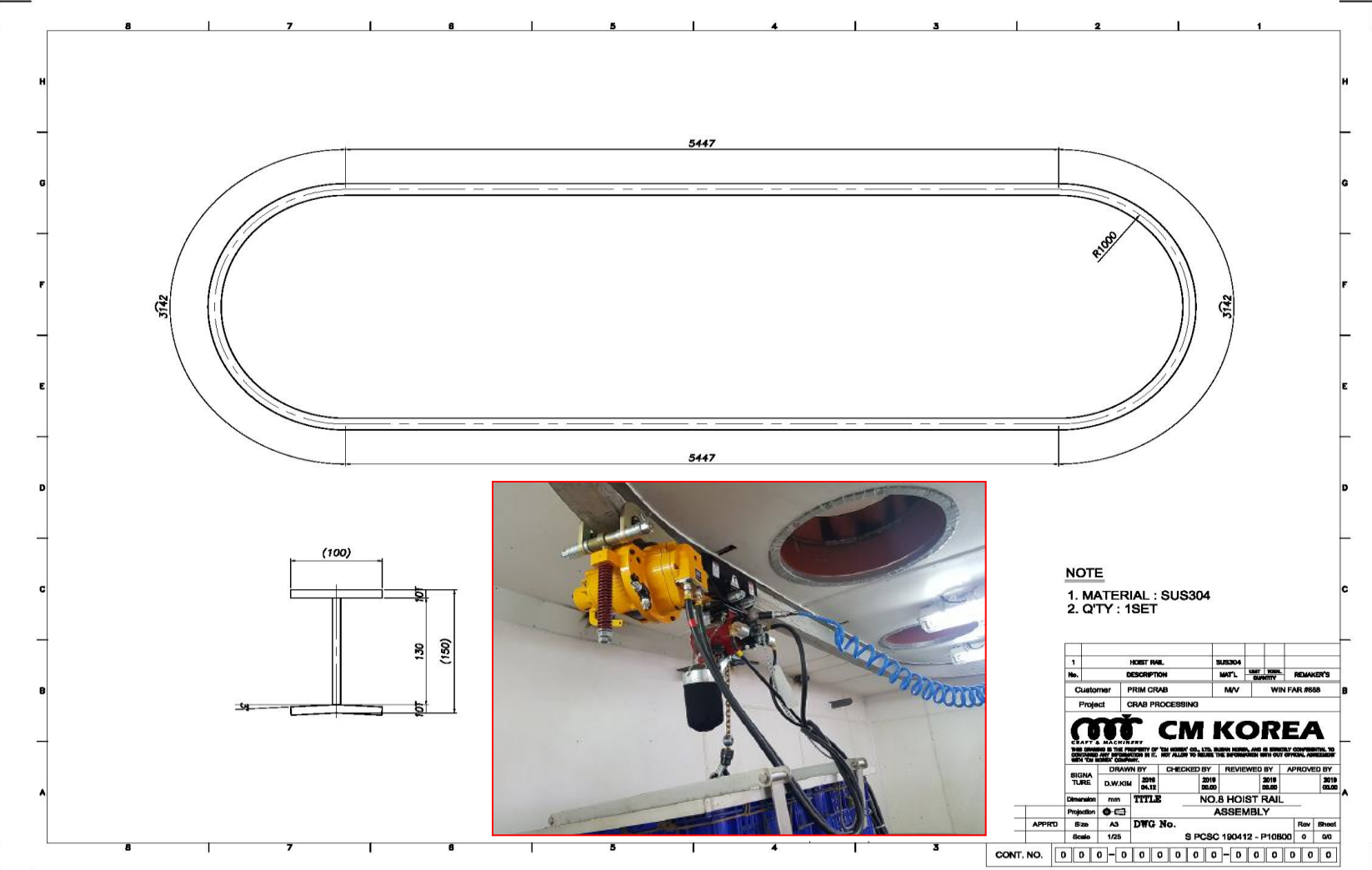
# CRAB VESSEL – CRAB PROCESSING EQUIPMENT

## BELT CONVEYOR





# CRAB VESSEL – CRAB PROCESSING EQUIPMENT

## AIR HOIST RAIL



- NOTE**
1. MATERIAL : SUS304
  2. Q'TY : 1SET

1	HOIST RAIL	SUS304			
No.	DESCRIPTION	MAT'L	UNIT	QTY	REMARKS
Customer	PRIM CRAB	M/V			WIN FAR 8538
Project	CRAB PROCESSING				
 <b>CM KOREA</b> <small>CRAB &amp; MACHINERY</small> <small>THIS DRAWING IS THE PROPERTY OF CM KOREA CO., LTD. ALL RIGHTS RESERVED. AND IS STRICTLY CONFIDENTIAL. NO PART OF THIS DRAWING IS TO BE REPRODUCED OR TRANSMITTED IN ANY FORM OR BY ANY MEANS, ELECTRONIC OR MECHANICAL, WITHOUT THE WRITTEN PERMISSION OF CM KOREA CO., LTD.</small>					
SIGNATURE	DRAWN BY	CHECKED BY	REVIEWED BY	APPROVED BY	
	D.W.KIM	2018.06.12	2018.06.08	2018.06.08	2018.06.08
Dimension	mm	TITLE			
Projection		NO.8 HOIST RAIL ASSEMBLY			
APPROD	Size	A3	DWG No.		Rev
	Scale	1/25	S PCSC 190412 - P10800		Sheet
CONT. NO.		0	0	0	0
		0	0	0	0
		0	0	0	0
		0	0	0	0
		0	0	0	0
		0	0	0	0
		0	0	0	0
		0	0	0	0
		0	0	0	0
		0	0	0	0
		0	0	0	0
		0	0	0	0
		0	0	0	0
		0	0	0	0
		0	0	0	0
		0	0	0	0
		0	0	0	0
		0	0	0	0
		0	0	0	0
		0	0	0	0
		0	0	0	0
		0	0	0	0
		0	0	0	0
		0	0	0	0
		0	0	0	0
		0	0	0	0
		0	0	0	0
		0	0	0	0
		0	0	0	0
		0	0	0	0
		0	0	0	0
		0	0	0	0
		0	0	0	0
		0	0	0	0
		0	0	0	0
		0	0	0	0
		0	0	0	0
		0	0	0	0
		0	0	0	0
		0	0	0	0
		0	0	0	0
		0	0	0	0
		0	0	0	0
		0	0	0	0
		0	0	0	0
		0	0	0	0
		0	0	0	0
		0	0	0	0
		0	0	0	0
		0	0	0	0
		0	0	0	0
		0	0	0	0
		0	0	0	0
		0	0	0	0
		0	0	0	0
		0	0	0	0
		0	0	0	0
		0	0	0	0
		0	0	0	0
		0	0	0	0
		0	0	0	0
		0	0	0	0
		0	0	0	0
		0	0	0	0
		0	0	0	0
		0	0	0	0
		0	0	0	0
		0	0	0	0
		0	0	0	0
		0	0	0	0
		0	0	0	0
		0	0	0	0
		0	0	0	0
		0	0	0	0
		0	0	0	0
		0	0	0	0
		0	0	0	0
		0	0	0	0
		0	0	0	0
		0	0	0	0
		0	0	0	0
		0	0	0	0
		0	0	0	0
		0	0	0	0
		0	0	0	0
		0	0	0	0
		0	0	0	0
		0	0	0	0
		0	0	0	0
		0	0	0	0
		0	0	0	0
		0	0	0	0
		0	0	0	0
		0	0	0	0
		0	0	0	0
		0	0	0	0
		0	0	0	0
		0	0	0	0
		0	0	0	0
		0	0	0	0
		0	0	0	0
		0	0	0	0
		0	0	0	0
		0	0	0	0
		0	0	0	0
		0	0	0	0
		0	0	0	0
		0	0	0	0
		0	0	0	0
		0	0	0	0
		0	0	0	0
		0	0	0	0
		0	0	0	0
		0	0	0	0
		0	0	0	0
		0	0	0	0
		0	0	0	0
		0	0	0	0
		0	0	0	0
		0	0	0	0
		0	0	0	0
		0	0	0	0
		0	0	0	0
		0	0	0	0
		0	0	0	0
		0	0	0	0
		0	0	0	0
		0	0	0	0
		0	0	0	0
		0	0	0	0
		0	0	0	0
		0	0	0	0
		0	0	0	0
		0	0	0	0
		0	0	0	0
		0	0	0	0
		0	0	0	0
		0	0	0	0
		0	0	0	0
		0	0	0	0
		0	0	0	0
		0	0	0	0
		0	0	0	0
		0	0	0	0
		0	0	0	0
		0	0	0	0
		0	0	0	0
		0	0	0	0
		0	0	0	0
		0	0	0	0
		0	0	0	0
		0	0</		

## WORKING SCHEDULE



C.M KOREA

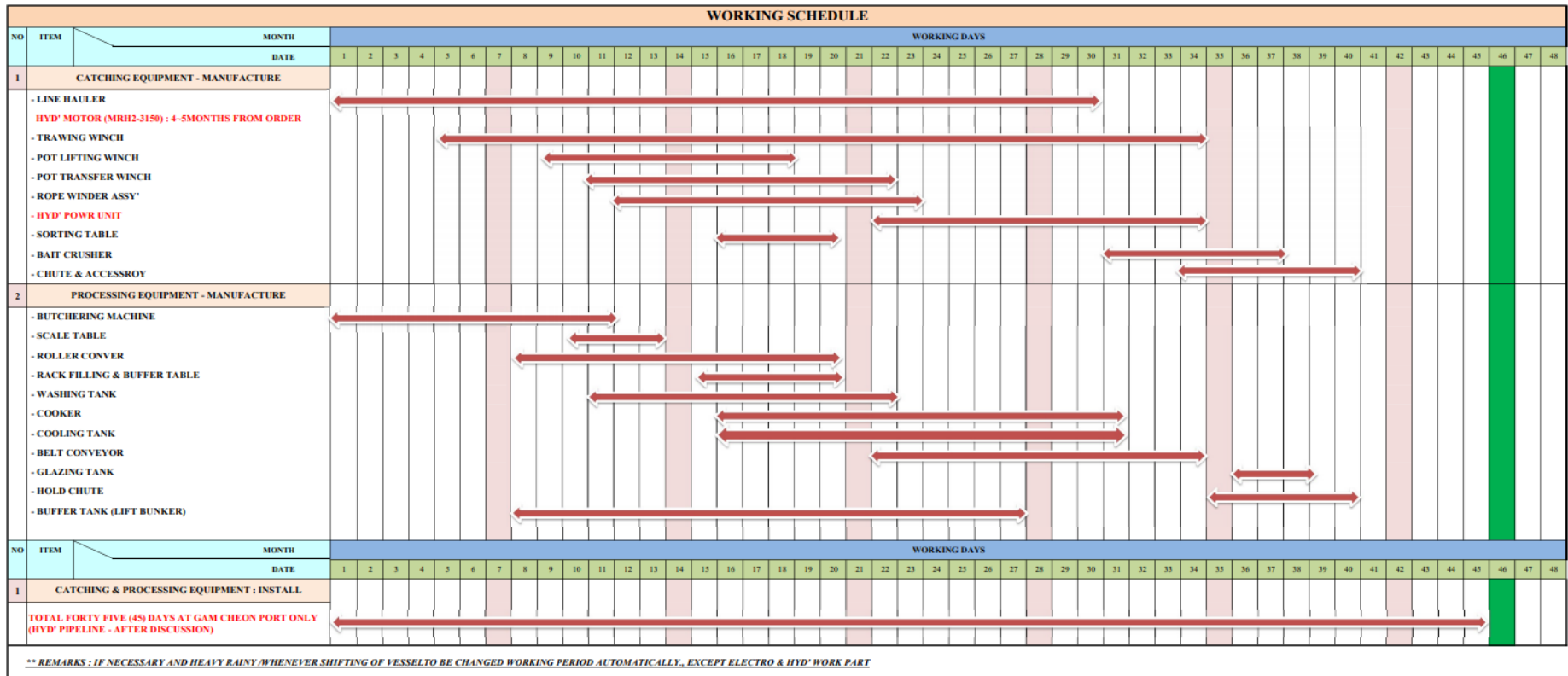


OWNER : PRIM CRAB

SHIP NAME : CRABBER

PROJECT : CATCHING & PROCESSING EQUIPMENT - MANUFACTURE

WORKING PERIOD : MANUFACTURE - 40DAYS FROM PLAN APPROVAL INSTALLATION - 45DAYS FROM GAM CHEON PORT

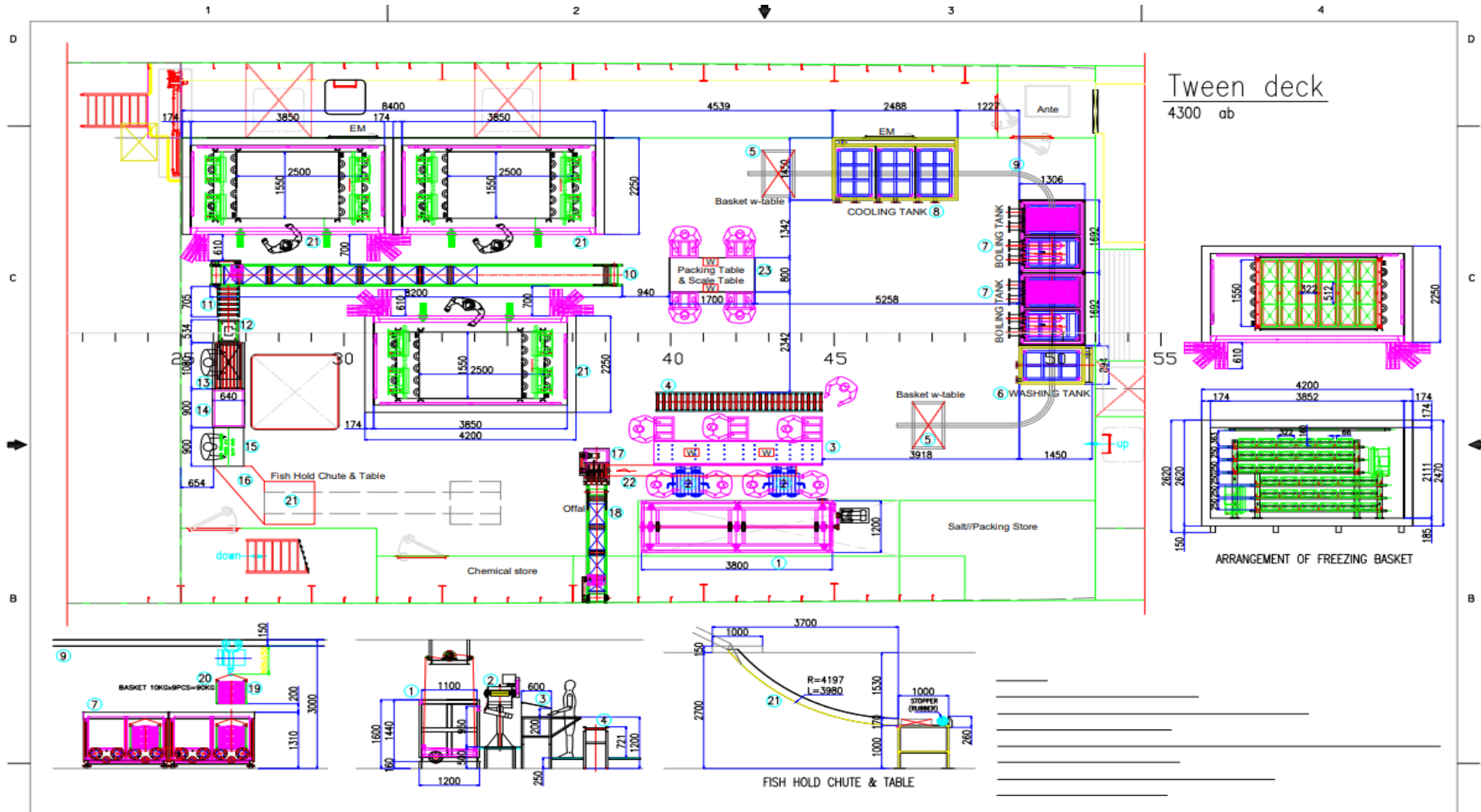


\*\* REMARKS : IF NECESSARY AND HEAVY RAINY /WHENEVER SHIFTING OF VESSEL TO BE CHANGED WORKING PERIOD AUTOMATICALLY, EXCEPT ELECTRO & HYD' WORK PART

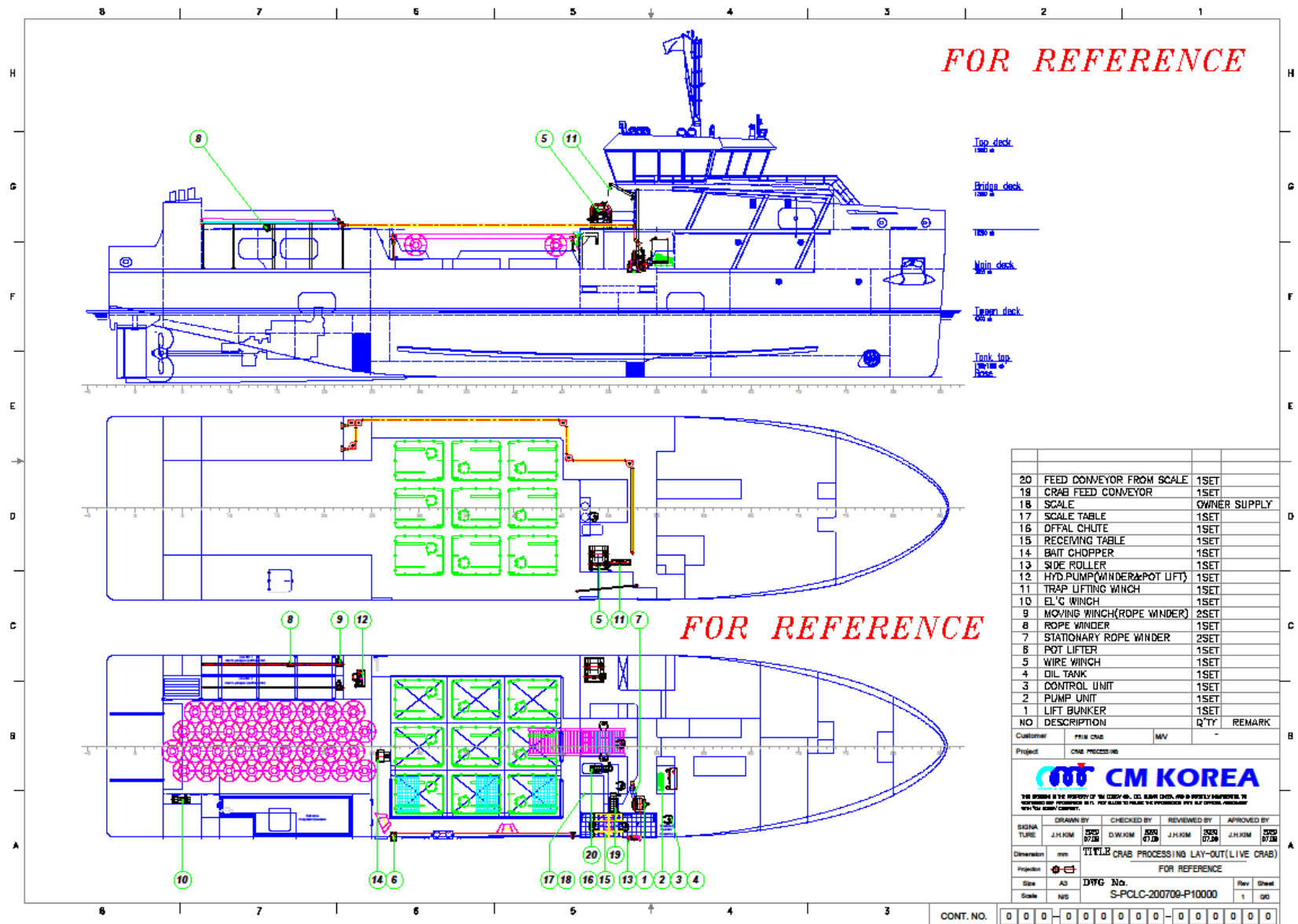


## PROCESSING EQUIPMENT LAY OUT FOR RUSSIAN CRAB

## NEW VERSION VESSELS - PRIM CRAB



# CATCHING EQUIPMENT LAY OUT FOR RUSSIAN CRAB



---

# THANK YOU!