



Chiba Marine Group

Japan - Korea - USA - Philippines

Your choice for your satisfaction

Chiba Marine Korea Co.,Ltd.



Company profile:

Chiba Marine Korea Co.,Ltd. was established 22 years ago as a repairing company in Korea.

We have three (3) sections to deal with worldwide ship owners and ship management companies.

1.Repairing section

This repairing section have been engaged in technical service to ship owners for all kinds of repairing at float and we provide qualified repair teams to sail with vessels and carry out repairs during navigation to save owner's/manager's running repair cost.

A large number of Japanese & Korean ship owners, shipbuilding companies and foreign ship owners are utilizing the services of **Chiba Marine Korea Co., Ltd.** as a back-up to their own operation.

In Addition

- [Yanmar Diesel Engine](#) after service authorized company in Korea

Chiba Marine Korea focus on growing need to the ship owner for original spare parts and quality service for Yanmar manufactured products. We provide qualified and expert service engineer to new building shipyard for not only initial commissioning, load testing and sea trial service but also routine maintenances and repair services in Korea

- [Kawasaki Precision Machinery \(KPM\) service station](#) in Korea

We are providing trained technicians to overhaul equipments including maintenances and repair for KPM steering gear, crane, windlass and hyd. pump & motors.

.

2.Spare parts section

We have established cooperation agreements with various manufacturers and trading firms in order to offer a complete delivery service of the major marine spare parts and equipment to the world.

By using this section for your purchase, you will join a pool of owners and enjoy the reduction of prices due to the volume of purchases being handled.

3.Store section

We provide all kinds of stores and delivery service all ports in Japan & Korea.



Office in Korea

Chiba Marine Korea Co.,Ltd.

21-1, Gupyeong-Ro,

Saha-Gu,

Busan, Korea.

Tel : (82) 51 418 8998

Fax : (82) 51 418 5880

E-mail: chibako@korea.com

chibako@naver.com



Office in Incheon

RM. B-710, Jeongkwang Sea palace officetel,

(Shinheungdong-3ga) 6, Inhang-ro, Jung-gu, Incheon

400-103 Korea

Tel. 032 888 6348

Fax. 050 4845 6245



Chiba Marine Group

Japan - Korea - Singapore - Philippines

Your choice for your satisfaction, Just a call away is Chiba Marine !

Repair

*We are providing specialized engineers with technical advice to ship owners
for all kind of repairing at afloat, on voyage in the world.
specialised in*

Engine works with minimum wastage in time and cost,

V-type engines (4hours per unit !! for Unit Decarbonizing)

KHI, MHI, MAN V52/55

Pielstick PC-2V, PC-4V

Turbo Chargers

Mitsubishi MET series, TV series

MAN NA series, VTR series

VTR - No Question everybody can do in the World.

Yanmar after service works

Original spare parts and quality service for Yanmar manufactured products.

Providing qualified & expert service engineer to new building shipyard

and routine maintenances and repair services for ship owner in Korea

Kawasaki Precision Machinery service works

Overhaul equipment including maintenances and repair for KPM steering gear

Crane, windlass and hyd-pump & motors in Korea

Store & Spare Parts Supply

All kind of Japanese and Korean product.

Complete delivery service of the major spare parts & equipment.

Boiler Works

Polishing tube plate



Cropping Damage tubes



New Superheater in place



Cutting Damage tubes



After install tubes

Tig welding "U" tubes

Economizer "U" tubes



Chiba Marine Group

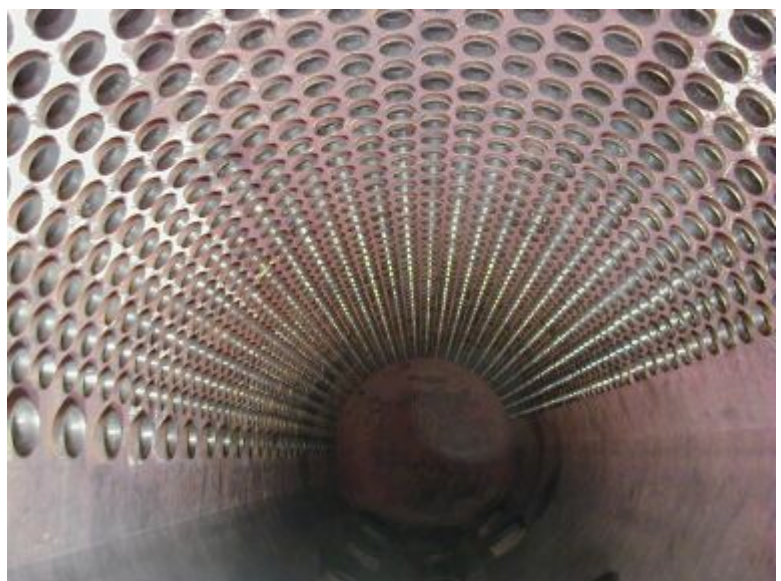
Polishing tube hole in the drum

New tubes installation



Tube plate dye-checking

Tube plate preparation



Chiba Marine Group

Engine Works

Afloat repair works in Korea anchorage
Main engine Mitsubishi 18V52/55A type



Liner honing



Removed Cyl., cover on deck inspection by dye check



M/E Exh., manifold



After removed exh manifold



Foundation frame repair

After overhauled engine, Ready for new exhaust manifold

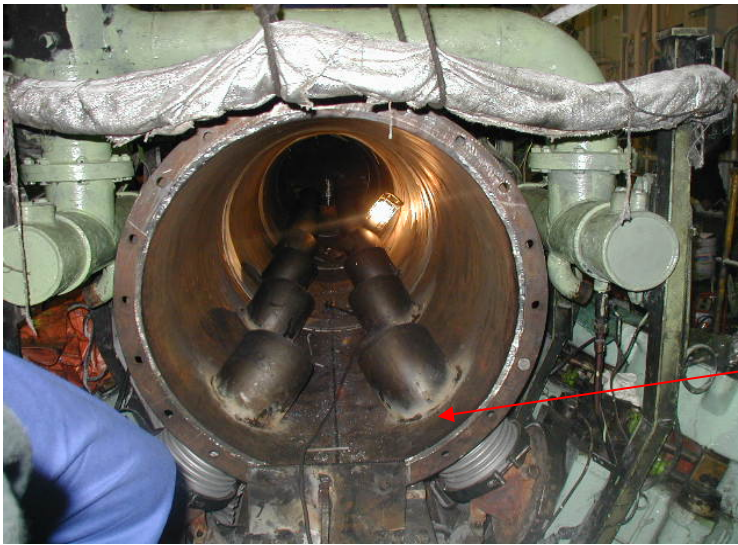
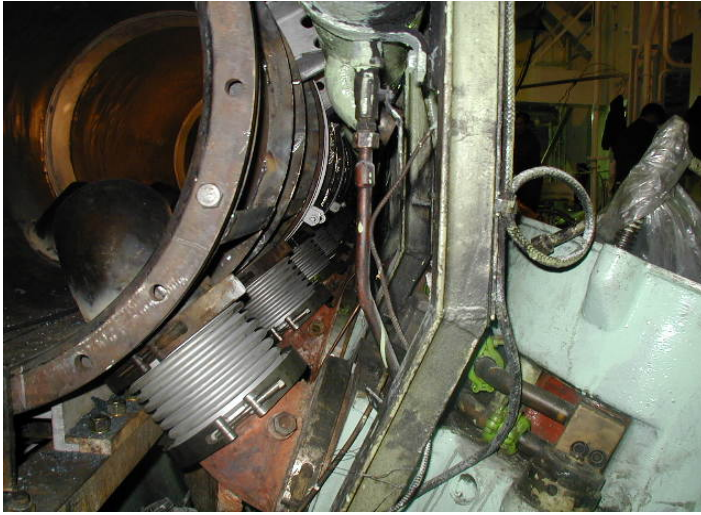


Deformed exh pipe



Fabricated new exhaust manifold





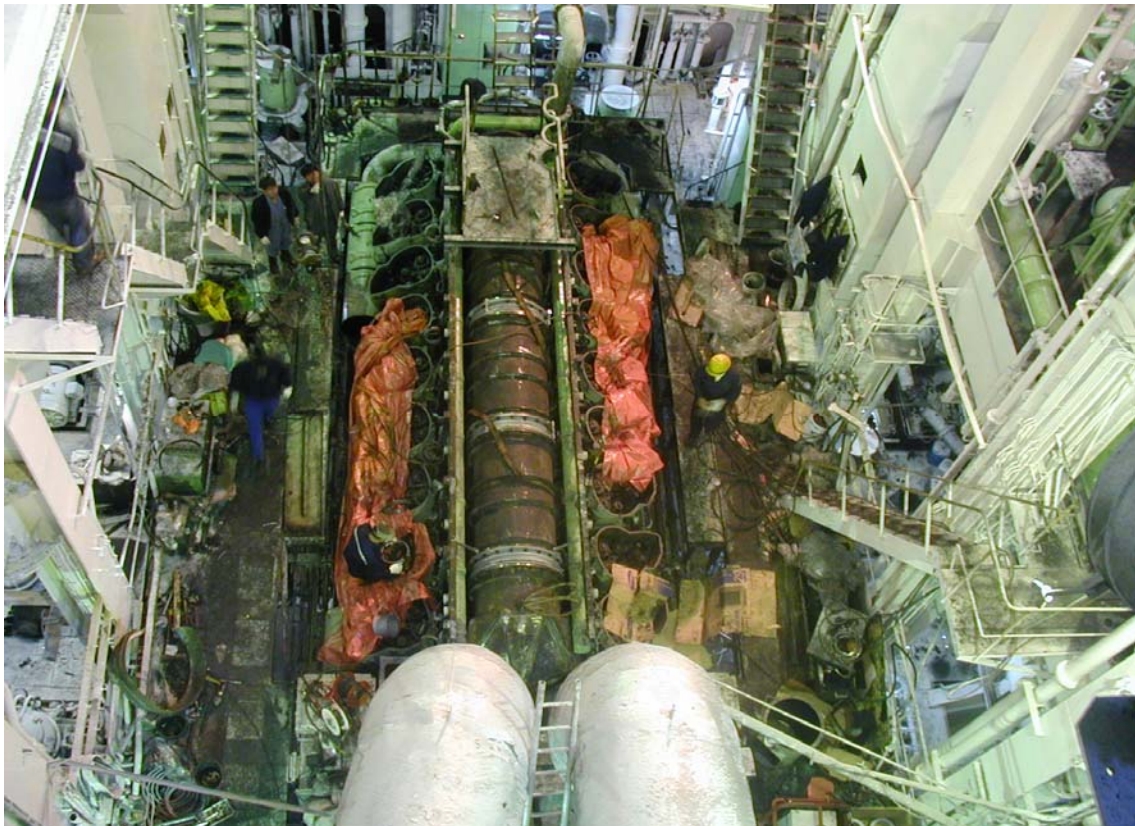
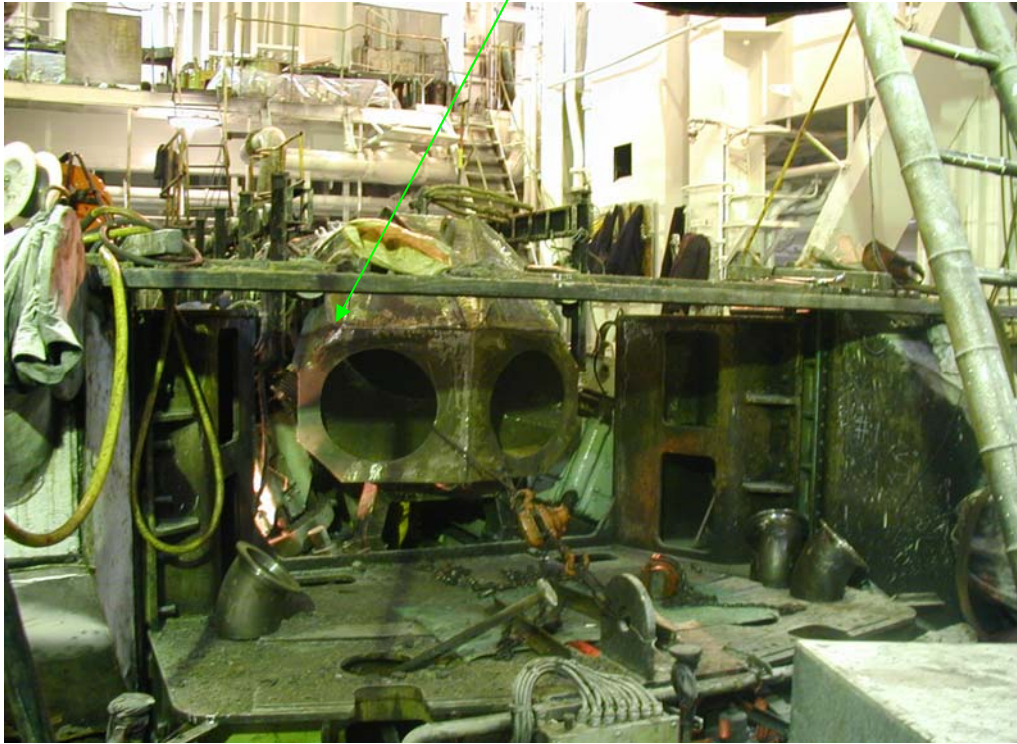
New exh pipe in place

New bellows

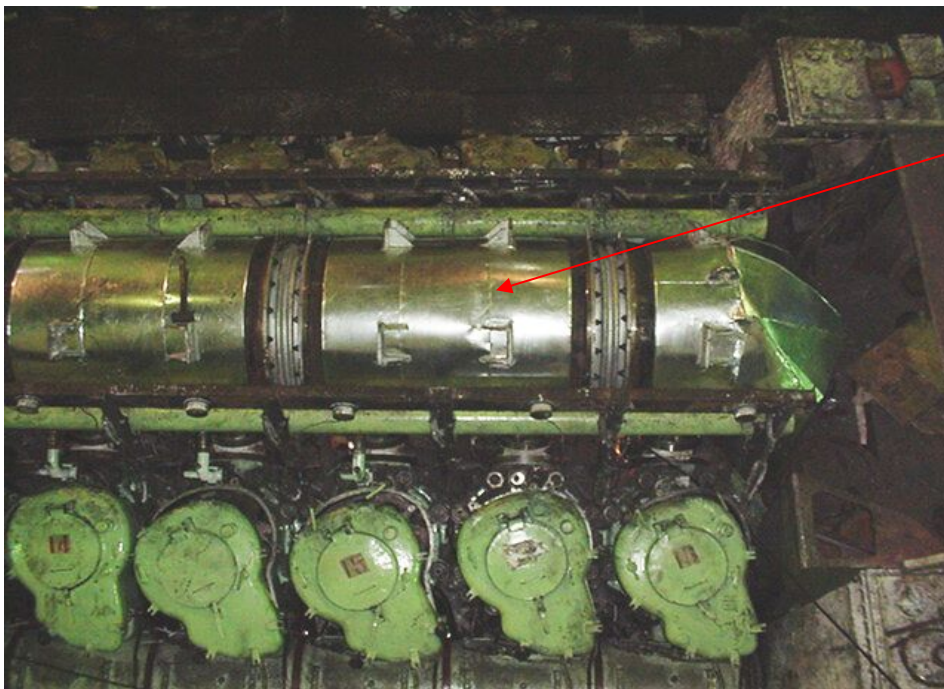
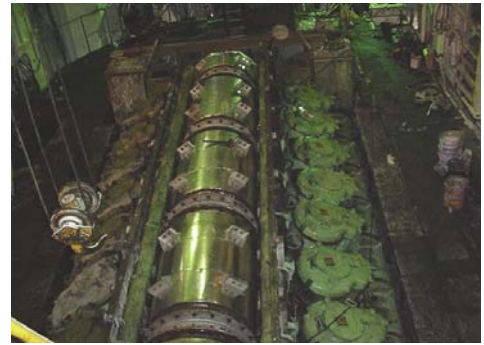
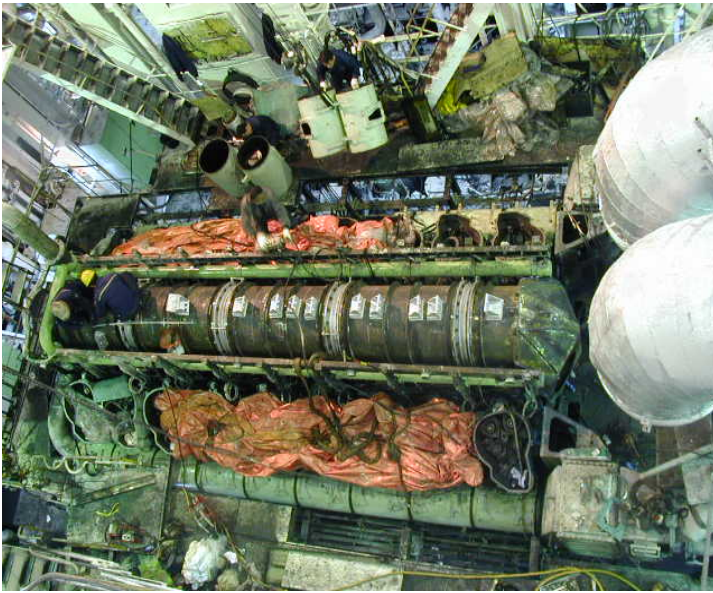
From Engine



Installed exhaust manifold and waiting for new turbo charger



Port side intake manifold replaced, Starboard on the way to install new manifold

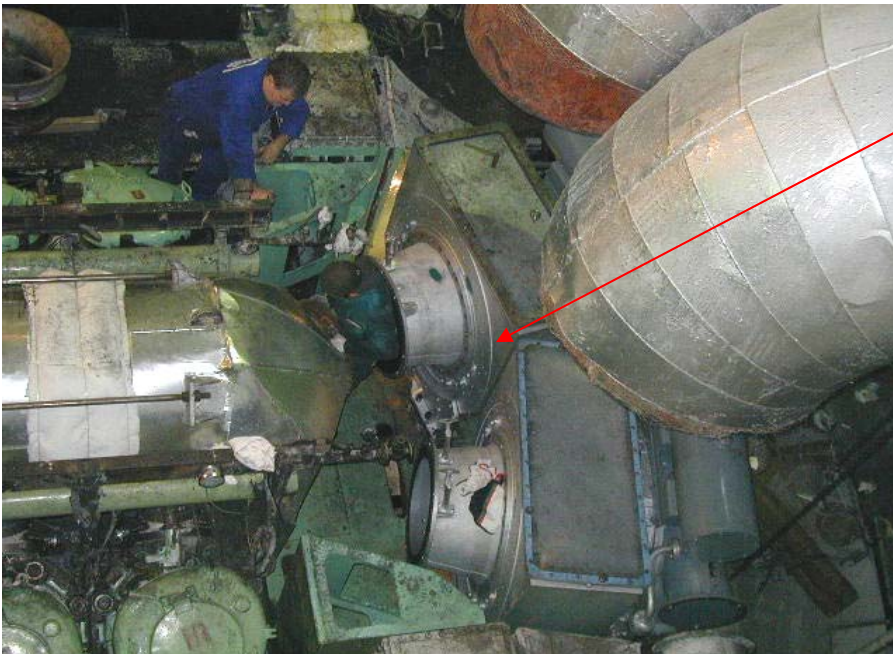
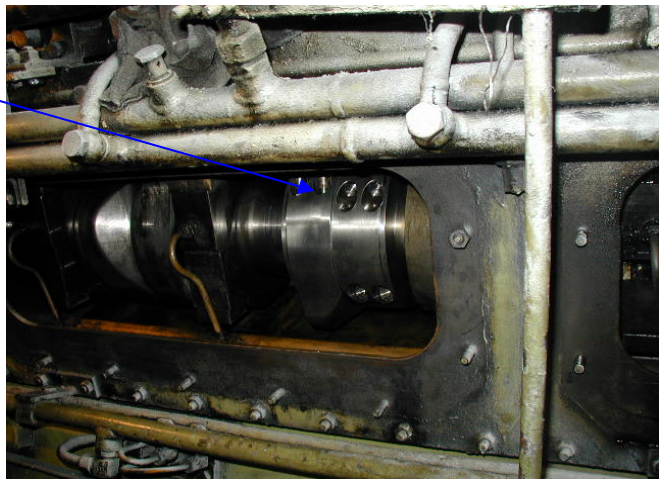


*Laaging with galv.,
plate*

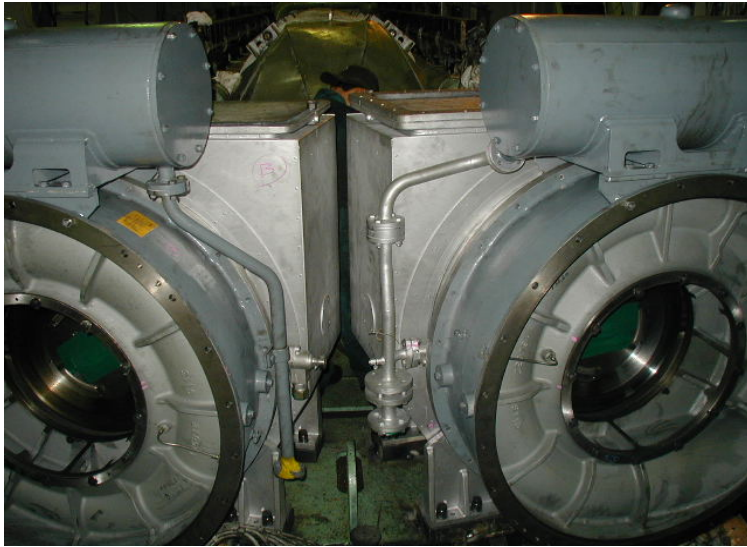


*M/E #3 Exh cam cropped by
drilling and
removed*

Installed spirit type cam



*Installed New
Turbo charger*



*Compensator
Renewed both
Exhaust pipes*

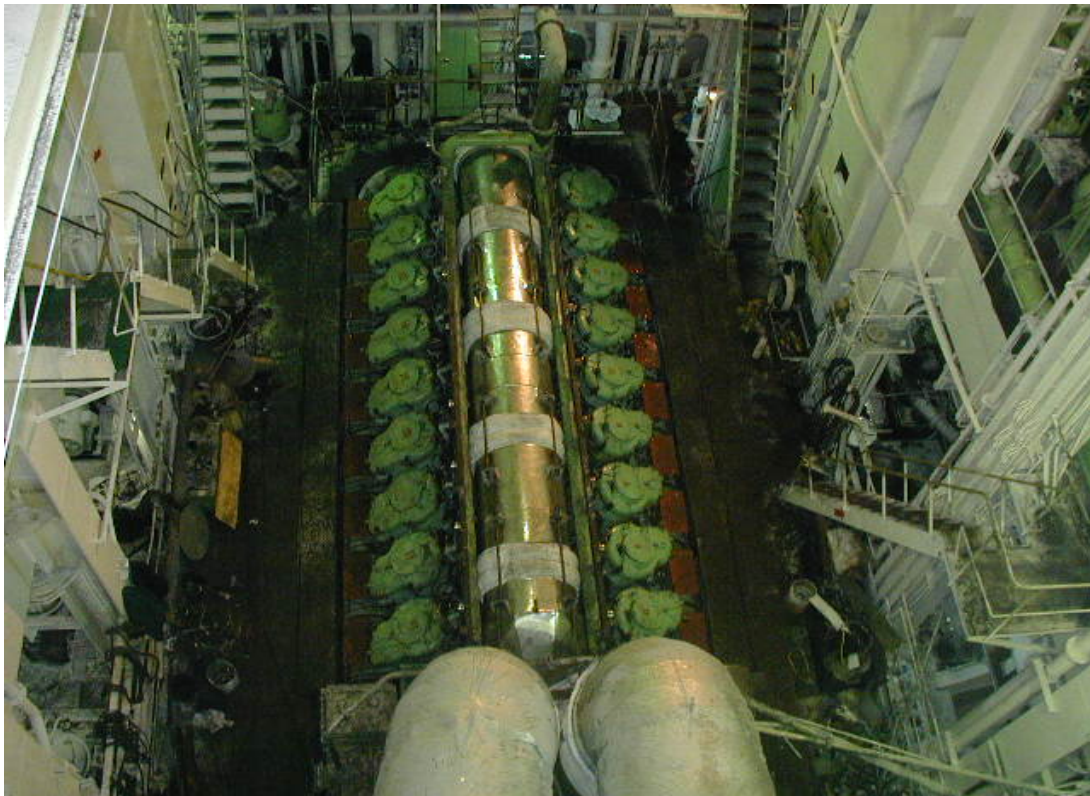


New Compensator

*Distance piece
between
compensator & T/Cs*



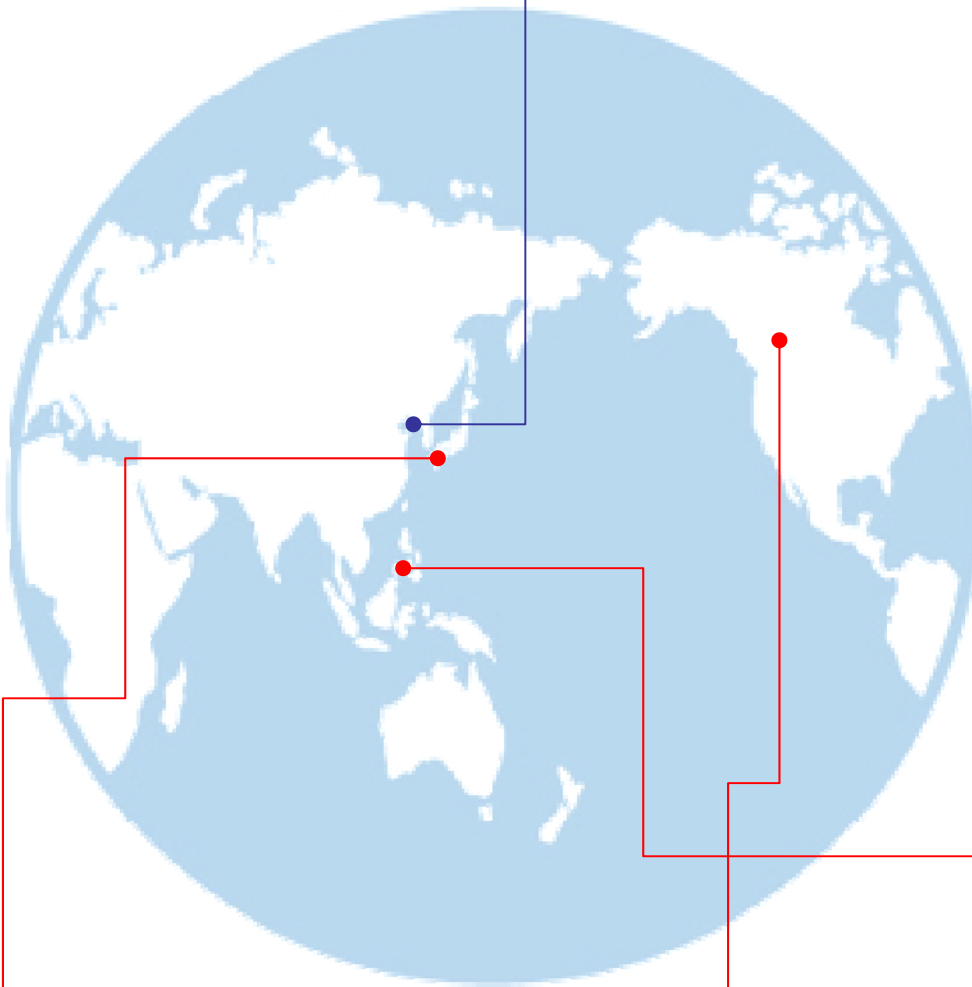
*Engine & Turbo
chargers ready for
Sea Trial*





Chiba Marine Korea Co.,Ltd.

21-1, Gupyeong-Ro.,
Saha-Gu, Busan, 604-817
Korea
Phone 82-51-418-8998
Fax 82-51-418-5880
e-mail chibako@korea.com



Japan

Chiba Marine Yokohama Co.,Ltd.

No. 4,Kamome-cho,Naka-ku
Yokohama, Japan 231-0813

Phone (81)45 621 5701
Fax (81)45 621 8364
e-mail cmy@chibamarine.jp



USA

Chiba Marine America, Inc.

1605 W. 14th St. Long Beach,
CA 90813 USA

Phone 214) 738-7328
Fax 562) 590-8887
e-mail chibasin@singnet.com.sg



Philippines

Chiba Marine (Repair) Manila

6th Floor, Victoria Bldg., 429
United Nations Avenue, Ermita,
Metro Manila, Philippines

Phone (63) 2 522 3982
Fax (63) 2 522 2048
e-mail chibamanila@pacific.net.ph